



tilemaster
adhesives

your solution for
**Tile Adhesives,
Grouts and
Levellers**

Product Guide

www.tilemasteradhesives.co.uk



**tilemaster
adhesives**



Because we care! And the big reason why we can provide for your tiling and flooring needs is because we are a caring family business that has been established since 1990 and we still maintain these unique family virtues for you as our valued customer for you to get the results that you want.

What we specifically offer you is a one to one service for your own customer requirements, covering product formulation, packaging, point-of-sale promotion, product demonstrations and technical site support.

All of our products are manufactured in our own factory in Leyland, Lancashire in accordance with the specified European legislation. Products are then distributed throughout the UK and Ireland within 24 - 48 hours to your premises or directly onto your contract site.

And our promise to you is that you will get our full Tilemaster Adhesive service commitment to supply you with a comprehensive range of tile adhesive, grout and floor-levelling products manufactured in our premises to the highest quality standards.

Which means that there is always a dependable Tilemaster solution for your own tiling and flooring requirements that you can completely trust and rely on to get a quality service and lasting performance.

What if you have any questions regarding your site requirements or choice of product? Then test out our friendly family service and please contact us now because we really do care about your business and we are genuinely here to help.

Tel: **0845 208 0040 / 01772 456831** Fax: **0845 208 0041**
e.mail : **info@tilemasteradhesives.co.uk**



www.tilemasteradhesives.co.uk

CONTENTS

Health & Safety

Guidelines.....	4
-----------------	---

Preparation WALLS

Gypsum Plaster.....	6
Gypsum Plasterboard.....	6
Cement: Sand Rendering.....	7
Concrete Blocks.....	7
Existing Tiles.....	8
Plywood.....	8
Tile Backer Boards onto Solid Substrates.....	9
Tile Backer Boards onto Rigid Framework.....	9
Calcium Silicate Boards.....	10

Preparation FLOORS

Sand and Cement Screed.....	11
Concrete Base.....	11
Tiling onto Existing Tiles.....	12
Existing Vinyl Tiles/Sheet Vinyl.....	12
Plywood Overlay.....	13
Tongue & Groove Floorboards.....	13
Flooring Grade Asphalt & Bitumen.....	14
Tilemaster Anti-fracture Mat & Uncoupling Membranes.....	14
Tile Backer Boards onto Timber Floors.....	15
Tile Backer Boards onto Solid Floors.....	15
Electric Under Tile Heating.....	16
Underfloor Heated Screeds.....	16
Anhydrite/Gypsum Screeds.....	17
Steel/Metal Substrate.....	17

Preparation

Movement Joints.....	18
European Standards.....	19

Tanking Kit

Preparation: Tanking Kit.....	20
Tanking Kit & Tanking Paste.....	21

Preparation

Substrate Priming Guide.....	22
------------------------------	----

Preparation Products

Primeplus.....	24
Prime + Grip.....	25
One Coat DPM.....	26
Flexmaster.....	27
Tile Backer Board: Deltaboard.....	28
Anti-fracture Mat.....	31

Floor Levellers

Rapid Repair Mortar.....	32
Leveller.....	33
Fineflow 3000.....	34
Levelflex.....	35
FlexiLevel.....	36
Rapid Level 30.....	37
Trade Flow.....	38
Pro Flow.....	39
AnhyLevel.....	40

Adhesives Rapid Setting

AnhyFix.....	41
Rapid Set.....	42
Rapid ExtraBond.....	43
Thick Bed FlexiRapid.....	44
Trade FlexiRapid.....	45
Light Weight Rapid.....	46
Rapid Setaflex.....	47
Ultimate.....	48

Adhesives Semi Rapid Setting

Setaflex Semi-Rapid.....	49
--------------------------	----

Adhesives Standard Setting

Standard Set.....	50
Standard Set Extrabond.....	51
Standard Set Setaflex.....	52
Light Weight Standard.....	53

Grouts

Grout 3000 Colour Chart.....	54
Grout 3000.....	55
Wide Joint Grout.....	56
Flexigrout.....	57
Wall Grout.....	58

Grout Selector

Selection Guide.....	59
----------------------	----

Silicone Sealant

Silicone 3000 Trade.....	60
Silicone 3000+.....	61

Tile Adhesive Selector

Selection Guide.....	62
----------------------	----

Health & Safety

As a responsible and dedicated manufacturer and distributor of cement-based products, Tilemaster Adhesives Ltd constantly monitor the safety of their products and recognise the risks involved when using their products without full education and personal protection during application. Once the material has achieved full set, it is non hazardous. All materials carry full health and safety labelling in a clear format recommended by the HSE (Health and Safety Executive).

Lifting

All Tilemaster Adhesives Ltd products weight range is capped at 25kg. Lifting should be carried out with the back straight and upright with the package as close to the torso as possible. Do not risk your health by carrying more than 25kg at any one time.

Essentially non-hazardous

Tilemaster Adhesives Ltd liquids and pastes when used in accordance with our instruction are generally non-hazardous but when dry may be difficult to remove from skin and finished surfaces.

- **Primeplus**
- **Flexmaster**
- **Silicone 3000+**
- **Prime + Grip**
- **Silicone 3000 Trade**
- **Tilemaster Tanking Paste**

Epoxy based products

These products are classified as posing a danger to health and must be used in accordance with the relevant Technical and Material Safety Data Sheets.

Avoid contact with skin and eyes. During use wear appropriate PPE, including gloves and goggles. Keep large working areas well ventilated at all times. For further information refer to the Material Safety Data Sheet.

Once the mixed product has cured it is classed as non-hazardous and can be disposed of in normal waste streams.

- **One Coat DPM**
- **Epoxy Grout**





Cement – based products

The HSE has identified the small amount of soluble Chromium VI that naturally appears in grey Portland cement as the element that stimulates an allergic dermatological reaction in some people that results in “contact dermatitis”. Legislation now requires manufacturers to keep levels of soluble chromium VI below 2 parts per million of the total dry weight of the cement content.

White cement/sulphate resisting cement and cement fondu all have contents below this level and are naturally compliant.

Ordinary Portland cement however needs to be treated to achieve these levels. All materials supplied by Tilemaster Adhesives Ltd are compliant or have been treated to meet HSE compliancy during the stated shelf life on the packaging. Bags must be stored unopened in clean, dry conditions, off the ground above 5°C and in a well-ventilated area. Use of treated products after the shelf life time may increase the risk of an allergic reaction.

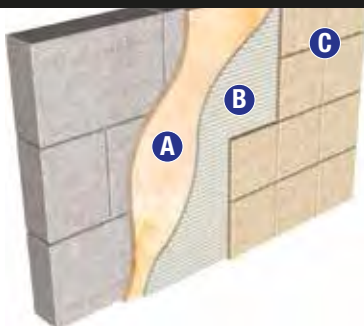
Cementitious mixes may contain relatively sharp and angular aggregates and are therefore relatively abrasive when wet. Newly applied product is also very alkaline.

Products

- Rapid Set
- Rapid Extrabond
- Rapid Setaflex
- Trade Flexi Rapid
- Ultimate
- Levelflex
- FlexiLevel
- Standard Set
- Leveller
- Fineflow 3000
- Rapid Repair Mortar
- Light Weight Rapid
- Light Weight Standard
- Standard Set Setaflex
- Standard Set Extrabond
- Wide Joint Grout
- Flexigrout
- Wall Grout
- Grout 3000
- Thick Bed FlexiRapid
- Setaflex Semi-Rapid
- Trade Flow
- Pro Flow

Substrate Preparation - WALLS

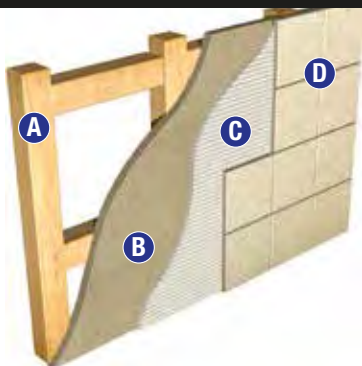
Gypsum Plaster



- A** Plaster
- B** Standard Set
Standard Set Extrabond
Standard Set Setaflex
Light Weight Standard
Setaflex Semi-Rapid
The equivalent Rapid Setting adhesive is also suitable
- C** Grout 3000
Wall Grout

- Allow 4 weeks minimum for new plaster to dry
- Ensure the surface is dry and free of any contaminants, loose dust or dirt
- If the plaster has a polished/shiny surface, brush with a stiff bristle brush to abrade/roughen the surface prior to application
- Prime the surface with 2 coats of Primeplus, both coats diluted 3 parts water to 1 part Primeplus. Allow the first coat to become touch dry before applying the second coat. Alternatively prime the surface with one coat of Prime + Grip ensuring 100% coverage and allow to dry
- *Max weight when tiling to plaster is 20kg/m² inc tiles, adhesive & grout*

Gypsum Plasterboard

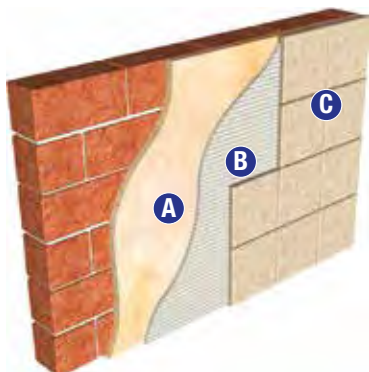


- A** Rigid Framework
- B** Plasterboard
- C** Standard Set Setaflex
Light Weight Standard
Setaflex Semi-Rapid
Rapid Setaflex
Trade FlexiRapid
- D** Grout 3000

- Ensure the boards are fixed securely to the framework, ideally screwed at 300mm centres
- Ensure the surface is dry and free of any contaminants, loose dust or dirt
- Prime the surface with one coat of Primeplus diluted 3 parts water to 1 part Primeplus and allow to dry. Alternatively prime the surface with one coat of Prime + Grip and allow to dry
- If the plasterboard is fixed to solid wall, Standard Set Extrabond can be used to fix the tiles and Wall Grout may be used for grouting the tiles
- *Max weight when tiling to plasterboard is 32kg/m² inc tiles, adhesive & grout*

PREPARATION - WALLS

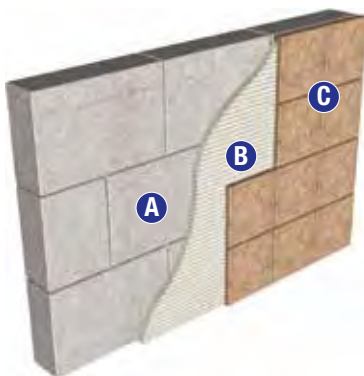
Cement: Sand Rendering



- A** Cement: Sand Render
- B** Standard Set Extrabond
Standard Set Setaflex
Light Weight Standard
Setaflex Semi-Rapid
The equivalent Rapid Setting adhesive is also suitable
- C** Grout 3000
Wall Grout

- Allow 2 weeks minimum for new render to dry
- Ensure the surface is dry and free of any contaminants, loose dust or dirt
- Prime absorbent surfaces with one coat of Primeplus diluted 3 parts water to 1 part Primeplus and allow to dry. Alternatively prime the surface with one coat of Prime + Grip and allow to dry
- *If tiling externally, protect the tiled area from water ingress for 48 hours*

Concrete Blocks



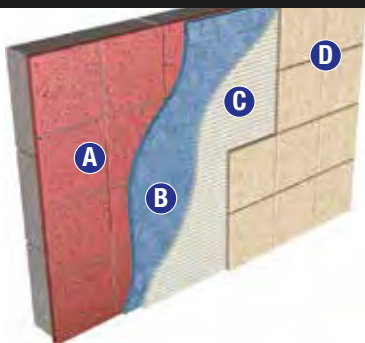
- A** Block Work
- B** Standard Set
Standard Set Extrabond
Standard Set Setaflex
Light Weight Standard
Setaflex Semi-Rapid
The equivalent Rapid Setting adhesive is also suitable
- C** Grout 3000
Wall Grout

- Ensure the surface is dry and free of any contaminants, loose dust or dirt
- Prime the surface with one coat of Primeplus diluted 3 parts water to 1 part Primeplus and allow to dry. Alternatively prime the surface with one coat of Prime + Grip and allow to dry
- If tiling directly to block work, ensure the wall is smooth faced
- If tiling externally, flexible tile adhesive and grout must be used
- *If tiling externally, protect the tiled area from water ingress for 48 hours*

PREPARATION - WALLS

Existing Tiles

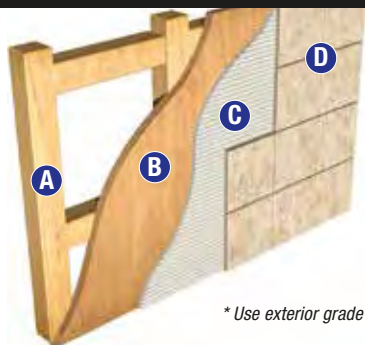
Ceramic, Porcelain & Natural Stone Tiles



- A** Existing Tiles
- B** Prime + Grip
- C** Standard Set Extrabond
Standard Set Setaflex
Light Weight Standard
Setaflex Semi-Rapid
Trade FlexiRapid
The equivalent Rapid Setting adhesive is also suitable
- D** Grout 3000
Wall Grout

- Make sure existing tiles are firmly bonded to the original substrate
- Remove any loose tiles and make good
- Ensure the surface is dry and free of any contaminants, loose dust or dirt
- Existing tiles that have been previously treated with a sealer must be sufficiently cleaned in order to remove any surface treatments
- Prime the surface with one coat of Prime + Grip and allow to dry. Alternatively prime the surface with one coat of Primeplus slurry mix and allow to dry before tiling

Plywood



- A** Rigid Framework
- B** Plywood *
- C** Standard Set Setaflex
Light Weight Standard
Setaflex Semi-Rapid
Trade FlexiRapid
The equivalent Rapid Setting adhesive is also suitable
- D** Grout 3000

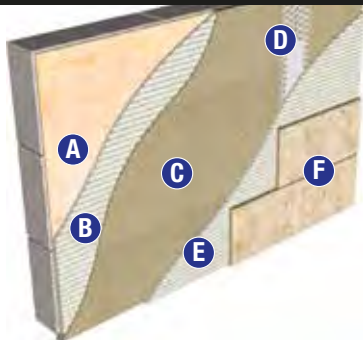
* Use exterior grade or moisture resistant materials

- Ensure the boards are fixed securely to the framework, ideally screwed at 300mm centres
- New or existing boards must be conditioned to the environment in which they will be used
- Make sure that there is sufficient ventilation behind the boards
- Ensure the surface is dry and free of any contaminants, loose dust or dirt
- The top surface of the plywood does not require priming prior to applying the adhesive
- Apply Tilemaster Tanking System if the tiled environment is subject to frequent wet conditions
- Max tiling weight (dependant on board type & thickness) is 30kg/m² inc tiles, adhesive & grout

PREPARATION - WALLS

Tile Backer Boards onto Solid Substrates

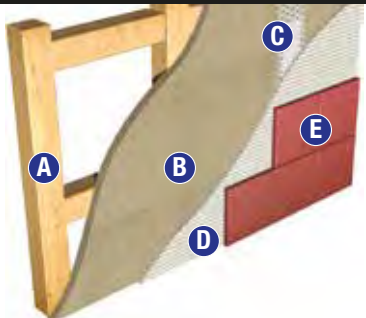
such as Blockwork/Render etc.



- A** Concrete/Blockwork/Render/Brick
- B** Rapid Setaflex
Trade FlexiRapid
Setaflex Semi-Rapid
- C** Tile Backer Board
- D** Jointing Tape
- E** Standard Set Extrabond
Standard Set Setaflex
Light Weight Standard
Setaflex Semi-Rapid
Trade FlexiRapid
The equivalent Rapid Setting adhesive is also suitable
- F** Grout 3000
Wall Grout

- Prime the original substrate with Primeplus or Prime + Grip as instructed in the priming guide see pages 22/23
- Fix the tile backer boards with a thin 3 – 6mm bed of adhesive or alternatively follow the fixing instructions of the board manufacturer
- Use jointing tape to reinforce the joints if necessary
- Before tiling commences, make sure that the adhesive used to fix the boards has set
- Ensure the surface is dry and free of any contaminants, loose dust or dirt
- Prime the tile backer boards with Primeplus diluted 3 parts water to 1 part Primeplus and allow to dry. Alternatively prime the surface with one coat of Prime + Grip and allow to dry
- *Max tiling weight (dependant on board type & thickness) is 50kg/m² inc tiles, adhesive & grout*

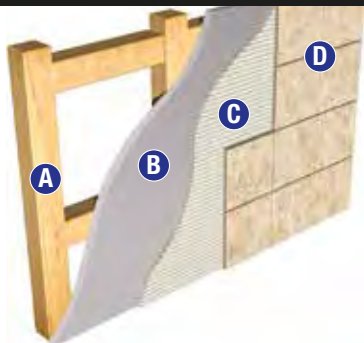
Tile Backer Boards onto Rigid Framework



- A** Rigid Framework
- B** Tile Backer Board
- C** Jointing Tape
- D** Standard Set Setaflex
Light Weight Standard
Setaflex Semi-Rapid
Trade FlexiRapid
The equivalent Rapid Setting adhesive is also suitable
- E** Grout 3000

- Ensure the boards are securely fixed to the framework, ideally screwed at 300mm centres
- Alternatively follow the fixing instructions of the board manufacturer
- Use jointing tape to reinforce the joints
- Ensure the surface is dry and free of any contaminants, loose dust or dirt
- Prime the tile backer boards with Primeplus diluted 3 parts water to 1 part Primeplus and allow to dry. Alternatively prime the surface with one coat of Prime + Grip and allow to dry
- *Max tiling weight (dependant on board type & thickness) is 50kg/m² inc tiles, adhesive & grout*

Calcium Silicate Boards

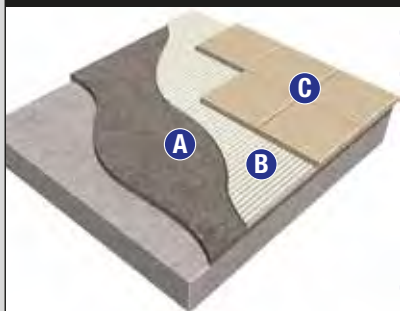


- A** Rigid Framework
- B** Calcium Silicate Board
- C** Standard Set Setaflex
Light Weight Standard
Setaflex Semi-Rapid
Trade FlexiRapid
*The equivalent Rapid Setting
adhesive is also suitable*
- D** Grout 3000

- Ensure the boards are fixed securely to the framework, ideally screwed at 300mm centres. Alternatively follow the fixing instructions of the board manufacturer
- Ensure the surface is dry and free of any contaminants, loose dust or dirt
- Prime the surface with one coat of Primeplus diluted 3 parts water to 1 part Primeplus and allow to dry. Alternatively prime the surface with one coat of Prime + Grip and allow to dry
- If the calcium silicate board is fixed to solid wall, Standard Set Extrabond can be used to fix the tiles and Wall Grout may be used for grouting the tiles
- *Max tiling weight (dependant on board type & thickness) is 30kg/m² inc tiles, adhesive & grout*

Substrate Preparation - FLOORS

Sand and Cement Screed



A Sand/Cement Screed

B Rapid Set
Rapid Extrabond
Rapid Setaflex
Trade FlexiRapid
Setaflex Semi-Rapid
***Ultimate adhesive**

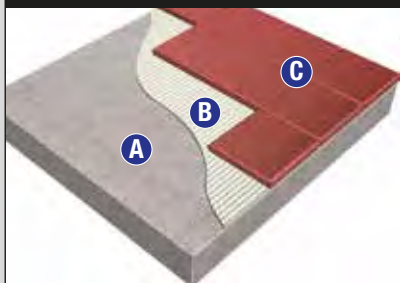
The equivalent Standard Setting adhesive is also suitable

C Grout 3000
Wide Joint Grout
Flexigrout

- New sand/cement screed must be left for a minimum of 4 weeks to dry sufficiently
- Remove any loose flaking layers and ensure that the surface is dry and free of any contaminants, loose dust or dirt
- Prime the surface with Primeplus diluted 3 parts water to 1 part Primeplus and allow to dry. Very porous screeds may require more than one coat. Alternatively prime the surface with one coat of Prime + Grip and allow to dry

* **When using Ultimate adhesive, tiling can commence after 7 days**

Concrete Base



A Concrete Base

B Rapid Set
Rapid Extrabond
Rapid Setaflex
Trade FlexiRapid
Setaflex Semi-Rapid
***Ultimate adhesive**

The equivalent Standard Setting adhesive is also suitable

C Grout 3000
Wide Joint Grout
Flexigrout

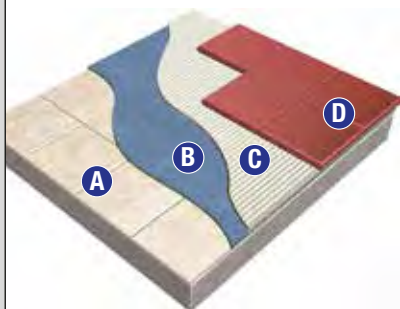
- New concrete must be allowed a minimum of 6 weeks drying time. As an approximate guide for drying times, allow 1 day per mm up to an overall depth of 50mm and 2 days per mm for anything above 50mm
- Before tiling, mechanically remove any laitance from the surface of the concrete and remove all dust by vacuum
- Ensure the surface is dry and free of any contaminants, loose dust or dirt
- Prime the surface with Primeplus diluted 3 parts water to 1 part Primeplus and allow to dry. Very porous screeds may require more than one coat. Alternatively prime the surface with one coat of Prime + Grip and allow to dry

* **When using Ultimate adhesive, tiling can commence after 7 days**

PREPARATION - FLOORS

Tiling onto Existing Tiles

Ceramic, Porcelain & Natural Stone Tiles

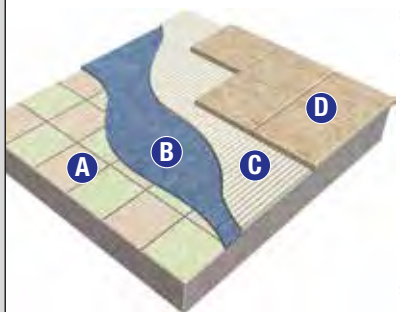


- A** Existing Tiles
- B** Prime + Grip
- C** Rapid Extrabond*
Rapid Setaflex
Trade FlexiRapid
Ultimate
Setaflex Semi-Rapid
The equivalent Standard Setting adhesive is also suitable
- D** Grout 3000
Wide Joint Grout
Flexigrout

- Make sure existing tiles are firmly bonded to the original substrate
- Remove any loose tiles and make good
- Ensure the surface is dry and free of any contaminants, loose dust or dirt
- Existing tiles that have been previously treated with a sealer must be sufficiently cleaned in order to remove any surface treatments
- Prime the surface with one coat of Prime + Grip and allow to dry. Alternatively prime the surface with one coat of Primeplus slurry mix and allow to dry before tiling

**Rapid Extrabond is only suitable when the original substrate is a solid substrate e.g. concrete*

Existing Vinyl Tiles/Sheet Vinyl



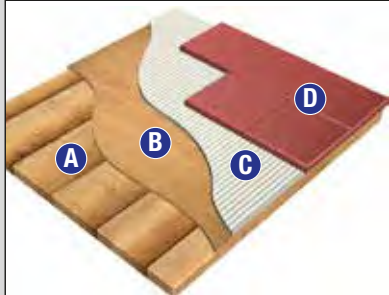
- A** Existing Tiles
- B** Prime + Grip
- C** Rapid Extrabond*
Rapid Setaflex
Trade FlexiRapid
Ultimate
Setaflex Semi-Rapid
The equivalent Standard Setting adhesive is also suitable
- D** Grout 3000
Wide Joint Grout
Flexigrout

- Make sure existing tiles are firmly bonded to the original substrate
- Remove any loose tiles and make good
- Ensure the surface is dry and free of any contaminants, loose dust or dirt
- Existing vinyl tiles that have been previously treated with a sealer must be sufficiently cleaned in order to remove any surface treatments
- Prime the surface with one coat of Prime + Grip and allow to dry. Alternatively prime the surface with one coat of Primeplus slurry mix and allow to dry before tiling

**Rapid Extrabond is only suitable when the original substrate is a solid substrate e.g. concrete*

PREPARATION - FLOORS

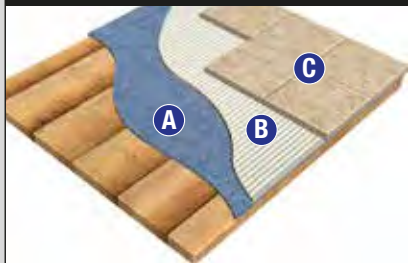
Plywood Overlay



- A** Floorboards
- B** Plywood Overlay
- C** Rapid Setaflex
Trade FlexiRapid
Ultimate
Setaflex Semi-Rapid
*The equivalent Standard Setting
adhesive is also suitable*
- D** Grout 3000
Flexigrout

- Plywood must be a minimum of 12mm, exterior grade or a minimum of 15mm when using Trade FlexiRapid
- New or existing boards must be conditioned to the environment in which they will be used
- Stagger the joints when fixing the plywood, leaving a 0.5 – 1mm gap between boards
- Plywood must be screwed (not nailed) to the substrate at 6 inch/150mm centres
- Ensure the surface is dry and free of any contaminants, loose dust or dirt
- The top surface of the plywood does not require priming prior to applying the adhesive

Tongue & Groove Floorboards

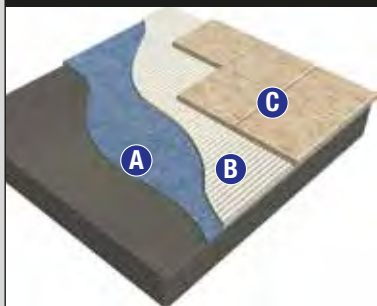


- A** Prime + Grip or
Primeplus
- B** Ultimate Adhesive
- C** Grout 3000 or
Flexigrout with
the addition of
Flexmaster
Additive

- New or existing boards must be conditioned to the environment in which they will be used
 - Ensure all floorboards are stable, securely fixed, screwed to supporting joists at 300mm centres and that there is sufficient ventilation beneath the substrate. *If fitting new T & G floorboards, fit the boards to run across the joists, not adjacent to the joists and ensure that all joins in boards are supported by joists or cross-noggings*
 - Remove all previous treatments such as varnish, polish, paint etc
 - Old floorboards that have been sanded or that are highly porous must be primed with one coat of neat Primeplus or Prime + Grip
 - Most types of new floorboard do not require priming, however, some types of timber floorboard have a finished coating/treatment on the surface. Floorboards that have a surface coating/treatment will require priming with one coat of Prime + Grip
- If in doubt, please contact our technical department on 01772 456831*

PREPARATION - FLOORS

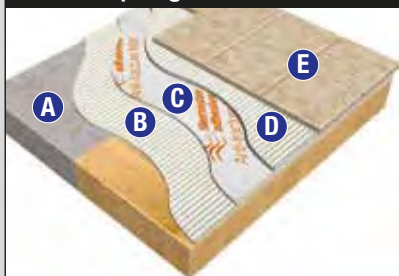
Flooring Grade Asphalt & Bitumen



- A** Prime + Grip
- B** Rapid Setaflex
Trade FlexiRapid
Ultimate
Setaflex Semi-Rapid
*The equivalent Standard
Setting adhesive is also suitable*
- C** Grout 3000
Flexigrout

- Ensure the surface is dry and free of any contaminants, loose dust or dirt
- Make sure that the asphalt/bitumen is in good condition, free from cracks and that there are no signs of debonding and/or hollowness
- Prime the surface with one coat of Prime + Grip and allow to dry.
Alternatively prime the surface with one coat of Primeplus slurry mix and allow to dry before tiling

Tilemaster Anti-fracture Mat & Uncoupling Membranes

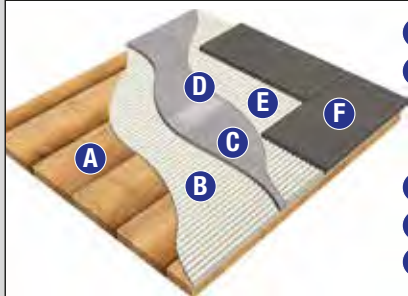


- A** Solid Substrate or
Timber Substrate
- B** Rapid Setaflex
Trade FlexiRapid
Ultimate
Setaflex Semi-Rapid
- C** Tilemaster Anti-fracture
Mat or Uncoupling
Membrane
- D** Rapid Setaflex
Trade FlexiRapid
Ultimate
Setaflex Semi-Rapid
*The equivalent Standard Setting
adhesive is also suitable*
- E** Grout 3000
Flexigrout

- Make sure the original substrate is firm, stable and in good condition
- Ensure the surface is dry and free of any contaminants, loose dust or dirt
- Prime the original substrate with Primeplus or Prime + Grip as instructed in the priming guide see pages 22/23
- Apply a thin 2 - 3mm bed of adhesive and lay the uncoupling membrane while the adhesive is still moist
- *When using Tilemaster Anti-fracture Mat, tiling can commence immediately after laying the anti-fracture mat*
- **If using another manufacturers uncoupling membrane, make sure that the adhesive used to fix the membrane has set prior to applying tiles**

PREPARATION - FLOORS

Tile Backer Boards onto Timber Floors

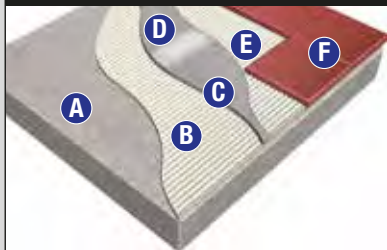


- Fix the tile backer boards with a thin 3 – 6mm bed of adhesive and mechanically fix the boards to the substrate at 300mm centres. Alternatively follow the fixing instructions of the board manufacturer
- Use jointing tape to reinforce the joints
- Before tiling commences, make sure that the adhesive used to fix the boards has set
- Ensure the surface is dry and free of any contaminants, loose dust or dirt
- Prime the tile backer boards with Primeplus diluted 3 parts water to 1 part Primeplus and allow to dry. Alternatively prime the surface with one coat of Prime + Grip and allow to dry

- A** Timber Floor
- B** Rapid Setaflex
Trade FlexiRapid
Ultimate
Setaflex Semi-Rapid
- C** Tile Backer Board
- D** Jointing Tape
- E** Rapid Setaflex
Trade FlexiRapid
Ultimate
Setaflex Semi-Rapid
The equivalent Standard Setting adhesive is also suitable
- F** Grout 3000
Flexigrout

Tile Backer Boards onto Solid Floors

such as concrete or sand/cement screed

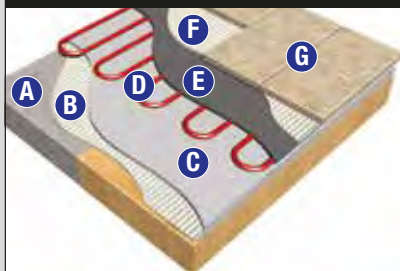


- Prime the original substrate with Primeplus or Prime + Grip as instructed in the priming guide see pages 22/23
- Fix the tile backer boards with a thin 3 – 6mm bed of adhesive or alternatively follow the fixing instructions of the board manufacturer
- Use jointing tape to reinforce the joints
- Before tiling commences, make sure that the adhesive used to fix the boards has set
- Ensure the surface is dry and free of any contaminants, loose dust or dirt
- Prime the tile backer boards with Primeplus diluted 3 parts water to 1 part Primeplus and allow to dry. Alternatively prime the surface with one coat of Prime + Grip and allow to dry

- A** Solid Substrate
- B** Rapid Extrabond
Rapid Setaflex
Trade FlexiRapid
Ultimate
Setaflex Semi-Rapid
- C** Tile Backer Board
- D** Jointing Tape
- E** Rapid Extrabond
Rapid Setaflex
Trade FlexiRapid
Ultimate
Setaflex Semi-Rapid
The equivalent Standard Setting adhesive is also suitable
- F** Grout 3000
Flexigrout

PREPARATION - FLOORS

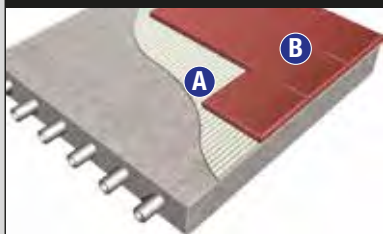
Electric Under Tile Heating



- Ensure the original substrate is firm, stable and in good condition
- Prime the original substrate with Primeplus or Prime + Grip as instructed in the priming guide see pages 22/23
- Fix the tile backer boards with a thin 3 – 6mm bed of adhesive or alternatively follow the fixing instructions of the board manufacturer
- Ensure the underfloor heating element/mat is taped down to the substrate
- Apply a 3 – 5mm layer of levelling compound in order to embed and protect the under tile heating element
- Begin tiling after 3 hours or after 45 – 60 minutes when levelling using Rapid Level 30
- Once tiling is complete, allow 7 days before switching on the underfloor heating, initially at a low temperature and increase gradually by no more than 2°C per day

- A** Solid Substrate or Timber Substrate
- B** Rapid Setaflex Trade FlexiRapid Ultimate Setaflex Semi-Rapid
- C** Thermal Construction Board
- D** Under Tile Heating
- E** Levelflex Rapid Level 30 FlexiLevel
- F** Rapid Setaflex Trade FlexiRapid Ultimate Setaflex Semi-Rapid
The equivalent Standard Setting adhesive is also suitable
- G** Grout 3000 Flexigrout

Underfloor Heated Screeds



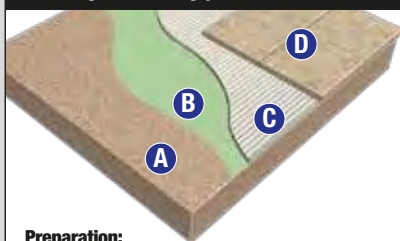
When fixing natural stone tiles to heated screed, we would recommend using Tilemaster Anti-fracture Mat in order to absorb any lateral movement caused by thermal expansion/contraction

- New sand/cement screed must be left for a minimum of 4 weeks to dry sufficiently
- The underfloor heating system must be commissioned prior to tiling by turning on the heating at a low temperature and heat the screed gradually by no more than 5°C per day until a maximum of 25°C (on the thermostat) is achieved. Maintain this temperature for a minimum of 3 days before allowing the screed to cool down to room temperature
- Turn off the heating 24 hours prior to tiling, or in cold weather reduce to below 15°C
- Prior to tiling, remove any loose flaking layers and ensure the surface is dry and free of any contaminants, loose dust or dirt
- Prime the surface of the screed with one coat of Primeplus diluted 3 parts water to 1 part Primeplus and allow to dry. Alternatively prime the surface with one coat of Prime + Grip and allow to dry
- Once tiling has been completed, allow 7 days before switching on or increasing the temperature of the heating. When turning on the heating, start at a low temperature and increase the temperature gradually by 2°C per day

- A** Rapid Setaflex Trade FlexiRapid Ultimate Setaflex Semi-Rapid
The equivalent Standard Setting adhesive is also suitable
- B** Grout 3000 Flexigrout

PREPARATION - FLOORS

Anhydrite/Gypsum Screeds



- A** Anhydrite Screed
- B** Primeplus
- C** AnhyFix
- D** Grout 3000 FlexigROUT

Preparation:

- Anhydrite screeds often dry with laitance on the surface, the laitance is a weak layer that is often shiny in appearance and looks like a hard crust. The laitance must be removed before tiling commences by mechanically sanding and/or abrading the surface of the screed using a floor sander with a 50's – 60's grit sandpaper
- Once the laitance has been removed, the screed should be vacuumed to remove all loose dust, dirt and contaminants

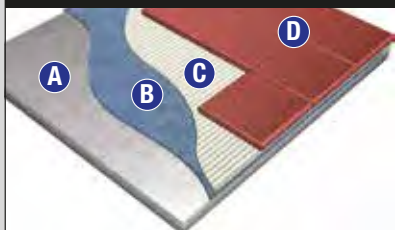
Moisture Testing & Drying of the Screed:

- Anhydrite screeds must be confirmed dry via consistent moisture readings across the whole floor. When using AnhyFix adhesive, the residual moisture content of the screed must be less than 1% or alternatively the relative humidity must be 85% or below. When using cement based adhesive the residual moisture content must be less than 0.5% or the relative humidity below 75%. As an approximate guide for drying times, allow 1 day per mm up to an overall depth of 40mm and 2 days per mm for anything above 40mm
- The drying of anhydrite screed can be assisted and accelerated once the screed is 7 days old by commissioning the underfloor heating system. Commission the system by turning on the heating at a low temperature and then gradually increase the temperature by no more than 5°C per day until a maximum temperature of 25°C on the thermostat is achieved. Maintain this temperature for a minimum of 3 days and then switch the heating off 48 hours prior to tiling to allow the substrate to cool sufficiently. Alternatively in cold conditions, reduce the temperature of the screed to below 15°C prior to tiling
- The drying of anhydrite screeds can also be accelerated with the use of dehumidifiers

Priming:

- When using AnhyFix adhesive, prime the surface of the screed with one coat of Primeplus diluted 3 parts water to 1 part Primeplus and allow to dry. Alternatively prime the surface with one coat of Prime + Grip and allow to dry
- When using cement based adhesive, prime the surface of the screed with 2 coats or Primeplus. The first coat must be diluted with 3 parts water and allowed to dry before applying a second coat of neat Primeplus

Steel/Metal Substrate



- A** Steel/Metal Substrate
- B** Prime + Grip
- C** Ultimate Adhesive
- D** Grout 3000 or FlexigROUT with the addition of Flexmaster additive

- Make sure the surface is free of any contaminants, loose dust or dirt and if required de-grease the surface of the substrate
- Prime the surface with one coat of Prime + Grip and allow to dry. Alternatively prime the surface with one coat of Primeplus slurry mix and allow to dry before tiling

Movement Joints

Movement/expansion joints are an essential part of tiling. Tiling can be affected by stresses in the substrate such as shrinkage, deflection, moisture movement and thermal expansion/contraction. This can result in tiles losing adhesion, de-bonding and/or cracking.

The solution is to incorporate movement joints through the tile and the adhesive bed. Movement joints should be placed wherever movement is likely to occur.

Interior Wall Tiling

Movement joints should be incorporated:

- Over existing and/or structural movement joints
- Where tiling abuts other materials
- Where tiling is continuous across junctions of different background materials
- In large tiled areas, at internal corners and at 3 – 4.5 metre centres both horizontally and vertically
- Where stresses are likely to be concentrated, e.g. at changes of alignment

Exterior Wall Tiling

Incorporate movement joints as per the instructions above for internal wall tiling, and in addition:

- At storey heights horizontally and 3 – 4.5 metres apart vertically
- At external angles, vertically 0.25 – 1 metres from the angle and symmetrically where possible
- Where an intermediate substrate is used, the movement joints should extend through it

Interior and Exterior Floor Tiling

Movement joints should be incorporated:

- Over existing and/or structural movement joints
- Around the perimeter of the floor, in door openings and where tiling abuts columns, curbs, steps and permanent fixtures
- Where tiling is across junctions of different base materials
- On large floor areas of solid substrates and well prepared timber substrates expansion joints should be incorporated every 80 - 100m². Where the substrate has underfloor heating expansion joints should be every 40m² and when fixing resin agglomerated tiles joints should be every 25m². *On suspended floors, the bay size should be reduced and additional joints provided over supporting walls and beams.*

Please Note: The above information is included as a guide only, for specific movement joint details, advice should be sought from an expert in this field.

European Standards

All Tilemaster products are manufactured in accordance with European Standards and meet or exceed the classifications that define the type and properties of each product:

Adhesives under BS EN 12004			
SYMBOL	TYPE	CLASS	DESCRIPTION
C		1	Normal cement based adhesive
C		1F	Fast setting cement based adhesive
C		1T	Normal cement based adhesive with reduced slip
C		1E	Normal cement based adhesive with extended open time
C		1TE	Normal cement based adhesive with extended open time and reduced slip
C		1FT	Fast setting cement based adhesive with reduced slip
C		2	Improved cement based adhesive with additional characteristics
C		2E	Improved cement based adhesive with additional characteristics and an extended open time
C		2F	Improved, fast setting cement based adhesive with additional characteristics
C		2T	Improved cement based adhesive with additional characteristics and reduced slip
C		2TE	Improved cement based adhesive with additional characteristics, reduced slip and an extended open time
C		2FT	Improved, fast setting cement based adhesive with additional characteristics and reduced slip
Adhesives under BS EN 12002: 2008			
S		1	Deformable adhesive
S		2	Highly deformable adhesive
Grouts under BS EN 13888: 2009			
CG		1	Cement based grout with normal characteristics
CG		2 W	Improved cement based grout with additional characteristics of reduced water absorption
CG		2 A	Improved cement based grout with additional characteristics of high abrasion resistance
CG		2 W A	Improved cement based grout with additional characteristics of reduced water absorption and high abrasion resistance

PREPARATION

Tilemaster Tanking Kit



- | | | |
|-------------------------------|--|------------------------|
| A Plaster/Plasterboard | E Rapid Setaflex
Trade FlexiRapid
Ultimate
Setaflex Semi-Rapid
<i>The equivalent Standard Setting
adhesive is also suitable</i> | F Grout 3000 |
| B Primeplus | | G Silicone 3000 |
| C Jointing Tape | | H Delta Tray |
| D Tanking Paste | | |

- Prime the substrate with Primeplus by following the instructions on the Tanking Kit pack
- Apply a thin coat of Tanking Paste to all joints, joints, corners, cracks and junctions
- Whilst the Paste is still wet, apply the preformed corners and bed them firmly into place
- Cut to measure the joint reinforcing tape and apply over all joints, joints, cracks and junctions and smooth down with a flat trowel
- Apply 2 coats of Tanking Paste to all surfaces at a thickness of approximately 0.5mm. Apply one coat vertically and one coat horizontally. Allow the first coat to dry (approx. 60 - 120 minutes) before applying the second coat
- Tiling can commence once the Tanking Paste has dried, usually 3 – 4 hours depending on the substrate and the application thickness

PREPARATION

Tanking Kit & Tanking Paste

Waterproofing Kit for areas exposed to wet/damp conditions

- Protects water sensitive substrates from exposure to water
- Seals and stabilises surfaces prior to applying tiles
- Apply to a large variety of substrates
- Ideal for wetrooms, showers, steamrooms & bathrooms
- Ready to use, easy to apply
- Fast drying, apply tiles after 4 hours



The Tilemaster Tanking Kit is an advanced sealing system based on co-polymer technology. It is designed to produce a barrier to moisture that is flexible enough to accommodate slight movement and/or vibration which may be expected under normal conditions of use in and around well constructed and structurally stable floors, walls and shower cubicles. The system seals, stabilises and prepares substrates ready for the installation of ceramic, porcelain and natural stone tiles.

The Tilemaster Tanking Kit comprises of a pre-mixed and easy to use waterproofing paste that is reinforced with fleece tape and preformed corner tapes. *All contents of the kit can also be purchased individually.*

APPLICATION AREAS/ENVIRONMENTS:

- ✓ Domestic and Commercial Showers
- ✓ Bathrooms
- ✓ Wetrooms
- ✓ Steamrooms
- ✓ Laundry/Utility Rooms
- ✓ Areas Subject to Prolonged Wet Conditions

SUBSTRATES:

- ✓ Sand/Cement Screed
- ✓ Concrete
- ✓ Plywood Overlay
- ✓ Electric Underfloor Heating
- ✓ Water/Wet System Underfloor Heating
- ✓ Tile Backer Boards
- ✓ Existing Ceramic, Porcelain and Natural Stone Tiles
- ✓ Flooring Grade Asphalt & Bitumen
- ✓ Anhydrite Screeds
- ✓ Plaster
- ✓ Plasterboard
- ✓ Fibre Cement Sheet
- ✓ Cement/Sand Render
- ✓ Concrete Brick/Block
- ✓ T & G Floorboards
- ✓ Floating Floors
- ✓ Existing Vinyl Tiles
- ✗ Steel/Metal Surfaces
- ✗ Fibreglass
- ✗ Green Screed

ALSO AVAILABLE

Self Adhesive Waterproof Tanking Tape



Tilemaster Tanking Tape



Internal Corner



External Corner



Contents:

5kg Tanking Paste, 10 metre roll of reinforcing tape, 2 internal corners, 1 litre Primeplus & latex gloves

Coverage:

5kg Tanking Paste covers 6.2m² when applying 2 coats

Drying Time:

In ideal conditions, tiling can commence after 3 – 4 hours

Application Temperature:

+5°C to +30°C

Paste Colour:

Blue

Pack Weight:

7kg

Substrate Priming Guide

Before tiling or applying self levelling floor compound, the majority of substrates will require priming and the reasons for priming are:

- To improve the adhesion of tile adhesives and levellers
- Reduce the porosity of porous substrates
- To stabilise and seal substrates
- Prolong the working time of tile adhesives and levellers
- Prime + Grip or Primeplus slurry mix improves the adhesion of tile adhesives and levellers to non-absorbent substrates
- Prime + Grip or Primeplus slurry mix helps stop contaminants from being drawn out of contaminated substrates

Primeplus and Prime + Grip are both excellent primers suitable for priming a large variety of surfaces. Prior to applying primer, you must ensure that the surface is dry and free of any contaminants, loose dust or dirt. Primeplus is diluted accordingly for the substrate type, see table below. Prime + Grip is always applied neat. **The primer must be touch dry before tile adhesive or self levelling floor compound is applied.**



Substrate	Dilution rate and application instructions
WALLS	
Gypsum Plaster	Prime the surface with 2 coats of Primeplus, both coats diluted 3 parts water to 1 part Primeplus. Allow the first coat to become touch dry before applying the second coat. Alternatively apply one coat of Prime + Grip ensuring 100% coverage
Gypsum Plasterboard	Prime the surface with one coat of Primeplus diluted 3 parts water to 1 part Primeplus. Alternatively apply one coat of Prime + Grip
Cement: Sand Rendering	Prime absorbent surfaces with one coat of Primeplus diluted 3 parts water to 1 part Primeplus. Alternatively apply one coat of Prime + Grip
Concrete Blocks	Prime the surface with one coat of Primeplus diluted 3 parts water to 1 part Primeplus. Alternatively apply one coat of Prime + Grip
Existing Tiles	Apply one coat of Prime + Grip. *Alternatively apply one coat of Primeplus slurry mix
Plywood	The top surface of the plywood does not require priming prior to applying adhesive or levelling compound providing the surface is free from all contaminants
Calcium Silicate Board & Fibre Cement Sheet	Prime the surface with one coat of Primeplus diluted 3 parts water to 1 part Primeplus. Alternatively apply one coat of Prime + Grip
Tile Backer Boards	Prime the surface with one coat of Primeplus diluted 3 parts water to 1 part Primeplus or apply one coat of Prime + Grip. Alternatively follow the board manufacturer's instructions

PREPARATION

Substrate	Dilution rate and application instructions
FLOORS	
Sand/Cement Screed	Prime the surface with one coat of Primeplus diluted 3 parts water to 1 part Primeplus. Very porous screeds may require more than one coat. Alternatively apply one coat of Prime + Grip
Concrete	Prime the surface with one coat of Primeplus diluted 3 parts water to 1 part Primeplus. Very porous screeds may require more than one coat. Alternatively apply one coat of Prime + Grip
Anhydrite Screeds	When using AnhyFix or AnhyLevel, apply one coat of Primeplus diluted 3 parts water to 1 part Primeplus or apply one coat of Prime + Grip. If using a cement based tile adhesive or levelling compound, please refer to page 17
Plywood	The top surface of the plywood does not require priming prior to applying adhesive or levelling compound providing the surface is free from all contaminants
T & G Boarding and Floorboards	Old floorboards that have been sanded or that are highly porous must be primed with one coat of neat Primeplus or Prime + Grip. Most types of new floorboard do not require priming, however, some types of timber floorboard have a finished coating/treatment on the surface. Floorboards that have a surface coating/treatment will require priming with one coat of Prime + Grip. If in doubt, please contact our technical department on 01772 456831
Existing Tiles	Apply one coat of Prime + Grip. *Alternatively apply one coat of Primeplus slurry mix
Existing Vinyl Tiles/ Sheet Vinyl	Apply one coat of Prime + Grip. *Alternatively apply one coat of Primeplus slurry mix
Flooring Grade Asphalt & Bitumen	Apply one coat of Prime + Grip. *Alternatively apply one coat of Primeplus slurry mix
Steel/Metal	Apply one coat of Prime + Grip. *Alternatively apply one coat of Primeplus slurry mix
Fibreglass	Apply one coat of Prime + Grip. *Alternatively apply one coat of Primeplus slurry mix
Green Screed	Prime the surface with one coat of Primeplus diluted 3 parts water to 1 part Primeplus. Alternatively apply one coat of Prime + Grip
Tile Backer Boards	Prime the surface with one coat of Primeplus diluted 3 parts water to 1 part Primeplus or apply one coat of Prime + Grip. Alternatively follow the board manufacturer's instructions

***Slurry Coat:** Primeplus diluted 1 to 1 with water mixed with approximately 30% by weight of cement based tile adhesive, grout or self levelling compound to form a brush on slurry/gritty primer

Primeplus

Priming and Bonding Agent

- Wall & floor primer for absorbent & non-absorbent surfaces
- Designed to prime, stabilise & seal substrates
- Increases the adhesion of tile adhesives & levellers
- Prolongs the working time of tile adhesives & levellers
- Water based



Primeplus is a highly advanced styrene butadiene polymer designed to prime, stabilise and seal substrates prior to the application of Tilemaster tile adhesives and self levelling compounds. Primeplus increases the adhesion and prolongs the working time of tile adhesives and self levelling compounds. Primeplus can be used on both absorbent and non-absorbent surfaces, internally and externally.

SUBSTRATES:

- | | |
|---|------------------------|
| ✓ Sand/Cement Screed | ✓ Plaster |
| ✓ Concrete | ✓ Plasterboard |
| ✓ Plywood Overlay | ✓ Fibre Cement Sheet |
| ✓ Electric Underfloor Heating | ✓ Cement/Sand Render |
| ✓ Water/Wet System Underfloor Heating | ✓ Concrete Brick/Block |
| ✓ Tile Backer Boards | ✓ T & G Floorboards |
| ✓ Existing Ceramic, Porcelain and Natural Stone Tiles | ✓ Floating Floors |
| ✓ Flooring Grade Asphalt & Bitumen | ✓ Existing Vinyl Tiles |
| ✓ Anhydrite Screeds | ✓ Steel/Metal Surfaces |
| | ✓ Fibreglass |
| | ✓ Green Screed |

Coverage:	1 litre applied neat will cover 10m ² . Diluted with 3 parts water, 1 litre will cover 40m ² . Applied as a slurry coat, 1 litre will cover 18m ²
Dilution Rates:	Please refer to the Priming Guide on pages 22/23
Drying Time:	Absorbent surfaces 30 – 60 minutes, non-absorbent surfaces 45 – 90 minutes
Application Temperature:	+5°C to +30°C
Colour:	Light Green
Pack Sizes:	1 litre & 5 litre bottles
Product Type:	Styrene butadiene co-polymer (SBR). Non-hazardous

PREPARATION

Prime + Grip

Multi-Purpose Bond Enhancing Primer



- Designed to prime, seal and stabilise substrates
- Significantly improves adhesion bond strength of tile adhesives and self-levelling compounds
- Excellent for use on a wide range of smooth, non-absorbent and absorbent surfaces
- Rapid drying – primer dries in as little as 15 minutes
- Prime straight from the re-sealable tub
- Provides an excellent key and “+ Grip” surface
- Ideal for tile on tile applications
- Ready mixed and ready to use primer
- Single part, high strength – accepts Tilemaster leveller up to 50mm thick

Tilemaster Prime + Grip is a ready mixed, ready to use, rapid drying primer that can be used on both absorbent and non-absorbent substrates. Prime + Grip provides a textured “+ Grip” surface which gives an excellent bonding surface for Tilemaster tile adhesives and self-levelling compounds. Prime + Grip is rapid drying and it can be tiled or levelled over after as little as 15 minutes. Prime + Grip is suitable for use internally and externally and the coverage rates of Prime + Grip are excellent, one 5kg unit will cover up to 65m². Prime + Grip is single part and it provides a high strength layer on which to apply Tilemaster self-levelling compounds and tile adhesives. Due to its high bond strength properties, Prime + Grip allows for Tilemaster self-levelling compounds to be applied up to 50mm thick in one application. Prime + Grip is our recommended primer to be used in conjunction with Tilemaster One Coat Damp Proof Membrane.

SUBSTRATES:

- | | |
|---|------------------------|
| ✓ Sand/Cement Screed | ✓ Plasterboard |
| ✓ Concrete | ✓ Fibre Cement Sheet |
| ✓ Plywood Overlay | ✓ Cement/Sand Render |
| ✓ Electric Underfloor Heating | ✓ Concrete Brick/Block |
| ✓ Water/Wet System Underfloor Heating | ✓ T & G Floorboards |
| ✓ Tile Backer Boards | ✓ Floating Floors |
| ✓ Existing Ceramic, Porcelain and Natural Stone Tiles | ✓ Existing Vinyl Tiles |
| ✓ Flooring Grade Asphalt & Bitumen | ✓ Steel/Metal Surfaces |
| ✓ Anhydrite Screeds | ✓ Fibreglass |
| ✓ Plaster | ✓ Green Screed |

Coverage:	45 – 65m ² per 5kg unit
Drying Time:	15 – 20 minutes in ideal conditions
Application Temperature:	+5°C to +30°C
Colour:	Blue
Pack Sizes:	5kg bucket
Product Type:	Acrylic co-polymer. Non-hazardous

PREPARATION

One Coat DPM

Surface Damp Proof Membrane – Epoxy Based

- 2 Component – One Coat DPM
- Suitable for use on substrates with a moisture reading of up to 97% RH
- Ideal for anhydrite / calcium sulphate screeds with a moisture reading of up to 87% RH
- Can be installed where no structural DPM is present (2 coats)
- Suitable for use over Underfloor Heating Systems
- High bond strength to various substrates
- Supplied in easy to use packaging
- Solvent free



One Coat DPM is a two component, solvent free, one coat epoxy Damp Proof Membrane. One Coat DPM is suitable for use on a wide range of substrates including concrete, sand/cement screeds, anhydrite and calcium sulphate screeds. The product is ideal for use as a damp proof membrane where the residual moisture content in a new or existing screed is up to 97% relative humidity (RH). One Coat DPM can also be used to deal with damp substrates where a structural damp proof membrane is not present or where the structural damp proof membrane is ineffective. Once cured, One Coat DPM produces a membrane which can accommodate hygrometer readings up to 97% RH on cement based screeds and 87% RH on anhydrite / calcium sulphate screeds without resulting in bond strength issues. One Coat DPM has effective resistance to water, grease, oil, dilute mineral and organic acids.

PLEASE NOTE: When applying One Coat DPM to a substrate where a structural damp proof membrane is not present or is ineffective, this product must be applied as a 2 coat system.

SUBSTRATES:

- ✓ Sand/Cement Screed
- ✓ Concrete
- ✓ Water/Wet System Underfloor Heating
- ✓ Existing Ceramic, Porcelain and Natural Stone Tiles
- ✓ Flooring Grade Asphalt & Bitumen
- ✓ Anhydrite / Calcium Sulphate Screeds
- ✓ Tile Backer Boards

Coverage:	Applications between 95 – 97%: RH = 20 – 25m ² per 10kg unit Applications below 95%: RH = 30m ² per 10kg unit
Working Time:	Approximately 45 minutes at 20°C
Cure Time:	Approximately 16 - 24 hours at 20°C
Application Temperature:	+10°C to +30°C
Pack Sizes:	3kg & 10kg metal pails
Colour:	Straw when mixed as a liquid. Dries colourless but intensifies the colour of the substrate

PREPARATION

Flexmaster

Multi Purpose Flexible Additive & Primer



AS A FLEXIBLE ADDITIVE

- Increases the flexural properties & adhesion properties of tile adhesives & grouts
- Improves the durability & water resistance of tile adhesives & grouts
- Can be added to all Tilemaster adhesives & grouts

AS A PRIMER

- Wall & floor primer for absorbent & non-absorbent surfaces
- Designed to prime, stabilise & seal substrates
- Increases the adhesion of tile adhesives & levellers
- Prolongs the working time of tile adhesives & levellers
- Water based

Flexmaster is a highly advanced acrylic based polymer which can be used as a flexible additive and/or a primer. As a flexible additive, Flexmaster increases the flexibility, durability, adhesion properties and water resistance of Tilemaster tile adhesives and grouts. Flexmaster is sold undiluted and as a result can be adapted/diluted to meet site requirements.

As a primer, Flexmaster is designed to prime, stabilise and seal substrates prior to the application of Tilemaster tile adhesives and self levelling compounds. Flexmaster increases the adhesion and prolongs the working time of tile adhesives and self levelling compounds. Flexmaster can be used on both absorbent and non-absorbent surfaces, internally and externally.

SUBSTRATES:

- | | |
|---|------------------------|
| ✓ Sand/Cement Screed | ✓ Plaster |
| ✓ Concrete | ✓ Plasterboard |
| ✓ Plywood Overlay | ✓ Fibre Cement Sheet |
| ✓ Electric Underfloor Heating | ✓ Cement/Sand Render |
| ✓ Water/Wet System Underfloor Heating | ✓ Concrete Brick/Block |
| ✓ Tile Backer Boards | ✓ T & G Floorboards |
| ✓ Existing Ceramic, Porcelain and Natural Stone Tiles | ✓ Floating Floors |
| ✓ Flooring Grade Asphalt & Bitumen | ✓ Existing Vinyl Tiles |
| ✓ Anhydrite Screeds | ✓ Steel/Metal Surfaces |
| | ✓ Fibreglass |
| | ✓ Green Screed |

Coverage as a Flexible additive:

5 litres of Flexmaster mixed with 3 parts water produces enough flexible additive for 80kg of tile adhesive

Coverage as a Primer: 1 litre applied neat will cover 10m². Diluted with 3 parts water, 1 litre will cover 40m². Applied as a slurry coat, 1 litre will cover 18m²

Dilution Rates: Vary depending on the application. Please refer to the product packaging

Drying Time as a Primer: Absorbent surfaces 30 – 60 minutes, non-absorbent surfaces 45 – 90 minutes

Application Temperature:
+5°C to +30°C

Colour:
White

Pack Sizes:
1 litre & 5 litre bottles

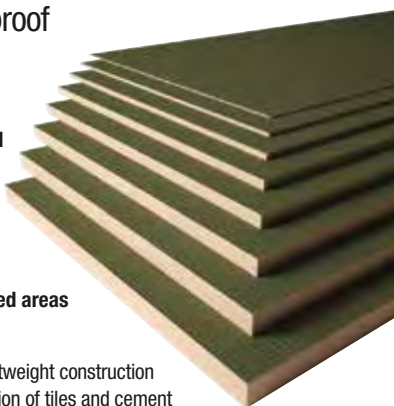
Product Type:
Acrylic co-polymer.
Non-hazardous

DeltaBoard

Thermal Construction Boards

Heat Insulating & Waterproof Construction/Tile Backer Boards

- Multi Purpose Tile Backer Board
- Essential with Electric underfloor heating
- Easy to use
- Waterproof
- High Durability
- Ideal for wet and fully submerged areas
- Available from 4mm - 70mm



Deltaboards are multipurpose lightweight construction boards that are perfect for the application of tiles and cement based screeds.

They are manufactured using high density extruded polystyrene which provides excellent insulating properties. The extruded polystyrene core has a factory applied reinforced cement coating which provides excellent impact strength and fire resistance making them ideal for construction environments.

Deltaboards are essential when fitting electric underfloor heating and make the underfloor heating system far more effective and efficient. The boards are resistant to water making them ideal for use in areas subject to prolonged and/or permanent water immersion.

Deltaboards are easy to use and can be fixed using Tilemaster rapid setting cement based tile adhesive. Solvent based or ready mixed adhesives must not be used. Alternatively Deltaboard can be fixed using dowels and washers. Once fixed, the boards provide a perfect surface on which to apply tiles.

For full installation and fixing instructions, please visit www.pcsboard.com or refer to the PCS wetroom systems product guide.

Type	Board Size L x W (mm)	Available Thicknesses (mm)
Standard	1200 x 600	4, 6, 10, 12.5, 20, 30, 40, 50, 60, 70
Standard Plus	1200 x 900	12.5
Midi	2400 x 600	10, 12.5, 20, 30, 40, 50, 60, 70
Midi Plus	2400 x 900	12.5
Maxi	2400 x 1200	12.5, 20, 60



DeltaTray

The Professionals Choice

DeltaTrays are “Ready to Tile”

shower bases that once installed create a “step free” wetroom/shower area. DeltaTrays are versatile and are easy to install.

The **DeltaTray** surface is manufactured with a preformed gradient ensuring that the water from the shower flows efficiently to the grid. DeltaTrays are manufactured from lightweight insulating foam with a factory applied hard wearing reinforced cement coating designed for the application of tiles.

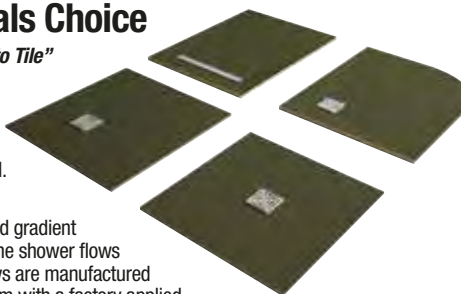
DeltaTrays are the perfect solution for converting bathrooms and en-suite into stunning wetroom/shower areas that not only creates a luxurious bathing environment but also adds value to your property.

Installing **DeltaBoards** onto the walls of the “wetzone” and also over the remaining floor surface of your bathroom will provide a totally waterproof surface, permanently protecting the walls and floors of your property.

DeltaTrays and **DeltaBoards** are insulated construction products and are totally compatible with electric under tile heating systems giving your floor that extra special touch of comfort. Installing an electric under tile heating system will also help to rapidly dry the floor after showering.

The **DeltaTray** range consists of over 25 different tray options incorporating different drain positions and styles such as centre drains, offset drains and linear drain options.

For full installation and fixing instructions on the **DeltaTray** range, please visit www.pcsboard.com or refer to the PCS wetroom systems product guide.



TILE BACKER BOARD

DeltaTray

The Professionals Choice

20mm Tray with Centre Drain

Product ID	Size	Thickness
G0010	800 x 800mm	20mm
G0020	900 x 900mm	20mm
G0030	1000 x 1000mm	20mm
G0040	1200 x 1200mm	20mm
G0050	1500 x 1500mm	20mm
G0075	900 x 1200mm	20mm

25mm Tray with Centre Drain

G0102	900 x 1500mm	25mm
G0115	900 x 1800mm	25mm

50mm Tray with Centre Drain

G0210	900 x 900mm	50mm
G0240	1200 x 1200mm	50mm
G0230	900 x 1200mm	50mm

20mm Tray with Offset Drain

G0060	1000 x 1000mm	20mm
G0080	1000 x 1200mm	20mm
G0090	1200 x 1200mm	20mm
G0070	800 x 1200mm	20mm
G0076	900 x 1200mm	20mm

25mm Tray with Offset Drain

G0100	800 x 1500mm	25mm
G0110	800 x 1800mm	25mm
G0105	900 x 1600mm	25mm

50mm Tray with Offset Drain

G0231	900 x 1200mm	50mm
G0232	900 x 1200mm	50mm
G0235	900 x 1200mm	50mm
G0200	900 x 1800mm	50mm

30mm Tray with Linear Drain

G0510	900 x 1200mm	30mm
G0515	900 x 1500mm	30mm
G0520	900 x 1500mm	30mm
G0500	900 x 900mm	30mm

Tilemaster Anti-fracture Mat

Anti-fracture / Uncoupling
Matting for Floors Subject
to Limited Movement

- Three layer anti-fracture/uncoupling mat designed to accommodate & absorb lateral movement in sub-floors
- Genuine fast-track system – can be tiled over immediately after fitting the mat
- Ideal for timber substrates
- Ideal for underfloor heating systems
- Use below ceramic, porcelain & natural stone tiles
- Easy to install – simply cut & place
- Only 0.85mm thick & minimises height build-up



Tilemaster Anti-fracture Mat is an anti-fracture / uncoupling matting designed for use on floor tile installations where there is a need to absorb and accommodate limited lateral movement. Tilemaster Anti-fracture Mat can be used in a wide range of applications in order to accommodate the lateral movement from substrates and also bridge stress / shrinkage cracking therefore preventing movement being transferred to the tiled finish. The matting can be used when installing a large variety of tiles including ceramic, porcelain and natural stone tiles. Tilemaster Anti-fracture Mat is ideal for domestic and commercial applications in light, medium and heavy duty environments.

SUBSTRATES:

- | | |
|---|------------------------|
| ✓ Sand/Cement Screed | ✓ Anhydrite Screeds |
| ✓ Concrete | ✓ Fibre Cement Sheet |
| ✓ Plywood Overlay | ✓ T & G Floorboards |
| ✓ Electric Underfloor Heating | ✓ Floating Floors |
| ✓ Water/Wet System Underfloor Heating | ✓ Existing Vinyl Tiles |
| ✓ Tile Backer Boards | ✓ Steel/Metal Surfaces |
| ✓ Existing Ceramic, Porcelain and Natural Stone Tiles | ✓ Fibreglass |
| ✓ Flooring Grade Asphalt & Bitumen | ✗ Green Screed |

Composition:	Three layer composition, two outer layers of non-woven polypropylene with an inner butyl layer
Colour:	Grey base layer with a white branded top layer
Sheet Thickness:	0.85mm
Sheet Weight:	450g per m ²
20mtr Roll Weight:	Approximately 9.2kg
Roll Size:	20 metre roll x 1 metre wide

FLOOR LEVELLERS

Rapid Repair Mortar

Rapid Repair Mortar for Internal Walls & Floors

- Rapid setting, tile after 90 minutes
- Ideal for repairing, re-facing, filling and patching internal concrete, sand/cement screeds, render, stairtreads, ceilings and soffits
- Ideal for forming ramps
- Apply from 2 – 20mm unfilled, 5 – 50mm filled
- Slump free, ideal for vertical and horizontal applications
- Protein free
- Simply mix with water



Rapid Repair Mortar is a fast setting, rapid drying repair compound for internal repairs. It is designed for repairing, re-facing, filling and patching internal: concrete; sand/cement screed; render; stairtreads/risers; walls; ceilings; soffits and for making good around pipe work. The product can also be used for forming ramps up to 50mm.

Rapid Repair Mortar is ideal for depths between 2 – 20mm unfilled and when mixed with aggregate can be applied to depths of 50mm. The mortar reaches initial set after 15 – 20 minutes, is set sufficiently to walk on after 30 minutes and can be covered with tiles or soft flooring after 90 minutes regardless of the application thickness.

SUBSTRATES:

- ✓ Sand/Cement Screed
- ✓ Concrete
- ✗ Plywood Overlay
- ✓ Electric Underfloor Heating*
- ✓ Water/Wet System Underfloor Heating*
- ✓ Tile Backer Boards
- ✓ Existing Ceramic, Porcelain and Natural Stone Tiles
- ✗ Flooring Grade Asphalt & Bitumen
- ✗ Anhydrite Screeds
- ✓ Plaster

- ✓ Plasterboard
- ✓ Fibre Cement Sheet
- ✓ Cement/Sand Render
- ✓ Concrete Brick/Block
- ✗ T & G Floorboards
- ✗ Floating Floors
- ✗ Existing Vinyl Tiles
- ✗ Steel/Metal Surfaces
- ✗ Fibreglass
- ✗ Green Screed

* When mixed with Flexmaster Additive



Water Addition:	1.9 – 2.2 litres of water to 11kg Mortar
Coverage:	11kg pack will cover 7m ² at a depth of 1mm
Working Time:	Once mixed, Rapid Repair Mortar remains workable for approx. 10 minutes
Drying Time:	Light foot traffic after 15 – 20 minutes
Ready for Covering:	Tile after 60 – 90 minutes
Application Temperature:	+5°C to +30°C
Pack Sizes:	11kg
Colour:	Grey



FLOOR LEVELLERS

Leveller

Self Levelling Floor Compound

- Apply from 2 – 12mm in one pour
- Apply up to 25mm when mixed with aggregate
- Light foot traffic after 4 hours
- Tile after 8 hours
- Simply mix with water
- Protein free



Leveller is a fast setting and protein free cement based formulation designed for smoothing and levelling subfloors prior to the installation of floor coverings. Leveller can be applied to a depth of 12mm when simply mixed with water or to a maximum depth of 25mm when mixed with 3 – 5mm aggregate. Leveller will accept light foot traffic after 4 hours and after 8 hours ceramic, porcelain and natural stone tiles can be applied. Soft flooring such as linoleum, vinyl and carpet can be applied after 48 hours. Leveller is only suitable for use over solid substrates such as sand/cement screed and concrete.

SUBSTRATES:

- | | |
|---|------------------------|
| ✓ Sand/Cement Screed | ✗ Anhydrite Screeds |
| ✓ Concrete | ✗ Fibre Cement Sheet |
| ✗ Plywood Overlay | ✗ T & G Floorboards |
| ✗ Electric Underfloor Heating | ✗ Floating Floors |
| ✗ Water/Wet System Underfloor Heating | ✗ Existing Vinyl Tiles |
| ✓ Tile Backer Boards | ✗ Steel/Metal Surfaces |
| ✓ Existing Ceramic, Porcelain and Natural Stone Tiles | ✗ Fibreglass |
| ✗ Flooring Grade Asphalt & Bitumen | ✗ Green Screed |

Water Addition:	4.2 – 4.6 litres of water to 20kg Leveller
Coverage:	20kg will cover 4.2m ² at a depth of 3mm
Working Time:	Once poured, Leveller remains workable for approx. 20 minutes
Drying Time:	Light foot traffic after 4 hours
Ready for Covering:	Tile after 8 hours
Application Temperature:	+5°C to +30°C
Pack Sizes:	20kg
Colour:	Grey



FLOOR LEVELLERS

Fineflow 3000

Exceptional Flowing & Smoothing Self Levelling Floor Compound

- Apply from feather edge – 20mm in one pour
- Fast setting - tile after 3 hours
- Ideal for underfloor heating systems
- Excellent levelling & smoothing properties
- Apply impervious floor finishes after 24 hours
- Simply mix with water
- Protein free
- Pump-able



Fineflow 3000 is a fast drying, free flowing and protein free cement based formulation designed for smoothing and levelling subfloors prior to the installation of floor coverings. Fineflow can be applied from depths of feather edge – 20mm in one application and it is suitable for use on all common substrates including underfloor heating systems. Fineflow is fast setting and therefore ceramic, porcelain and natural stone tiles can be applied after 3 hours and impervious floor finishes such as decorative vinyl after 24 hours.

SUBSTRATES:

- | | |
|---|------------------------|
| ✓ Sand/Cement Screed | ✓ Anhydrite Screeds |
| ✓ Concrete | ✓ Fibre Cement Sheet |
| ✗ Plywood Overlay | ✗ T & G Floorboards |
| ✓ Electric Underfloor Heating | ✗ Floating Floors |
| ✓ Water/Wet System Underfloor Heating | ✓ Existing Vinyl Tiles |
| ✓ Tile Backer Boards | ✗ Steel/Metal Surfaces |
| ✓ Existing Ceramic, Porcelain and Natural Stone Tiles | ✗ Fibreglass |
| ✓ Flooring Grade Asphalt & Bitumen | ✗ Green Screed |

- Water Addition:** 4.4 - 4.8 litres of water to 20kg Fineflow
- Coverage:** 20kg will cover 4.2m² at a depth of 3mm
- Working Time:** Once poured, Fineflow remains workable for approx. 20 minutes
- Drying Time:** Light foot traffic after 2 – 3 hours
- Ready for Covering:** Tile after 3 hours. Apply soft flooring such as vinyl after 24 hours
- Application Temperature:** +5°C to +30°C
- Pack Sizes:** 20kg
- Colour:** Grey



FLOOR LEVELLERS

Levelflex

Flexible & Fibre Reinforced Self Levelling Floor Compound

- Apply from 2 – 50mm in one pour
- Fast setting - tile after 3 hours
- Ideal for timber substrates
- Ideal for underfloor heating systems
- Apply directly to T & G floorboards
- Apply impervious floor finishes after 24 hours
- Simply mix with water
- Protein free
- Can be used as a wearing surface
- Pump-able



Levelflex is a flexible, fibre reinforced and protein free cement based formulation designed for smoothing and levelling subfloors prior to the installation of floor coverings. Levelflex can be applied from depths of 2mm – 50mm in one application and it is suitable for use on all common substrates including underfloor heating systems and timber substrates. Levelflex is fast setting and therefore ceramic, porcelain and natural stone tiles can be applied after 3 hours and impervious floor finishes such as decorative vinyl after 24 hours.

Under certain conditions Levelflex is suitable for use externally.

For further information, please contact our technical department on 01772 456831 or email: technical@tilemasteradhesives.co.uk

SUBSTRATES:

- | | |
|---|-------------------------|
| ✓ Sand/Cement Screed | ✓ Fibre Cement Sheet |
| ✓ Concrete | ✓ T & G Floorboards |
| ✓ Plywood Overlay (6mm min) | ✓ Floating Floors |
| ✓ Electric Underfloor Heating | ✓ Existing Vinyl Tiles |
| ✓ Water/Wet System Underfloor Heating | ✓ Steel/Metal Surfaces* |
| ✓ Tile Backer Boards | ✓ Fibreglass* |
| ✓ Existing Ceramic, Porcelain and Natural Stone Tiles | ✗ Green Screed |
| ✓ Flooring Grade Asphalt & Bitumen | |
| ✓ Anhydrite Screeds | |

* When primed with Prime + Grip



Water Addition:

4.5 - 5.0 litres of water to 20kg Levelflex

Coverage:

20kg will cover 4.2m² at a depth of 3mm

Working Time:

Once poured, Levelflex remains workable for approx. 20 minutes

Drying Time:

Light foot traffic after 2 – 3 hours

Ready for Covering:

Tile after 3 hours. Apply soft flooring such as vinyl after 24 hours

Application Temperature: +5°C to +30°C

Pack Sizes: 20kg

Colour: Grey



FLOOR LEVELLERS

FlexiLevel 25kg

Fibre Reinforced & Flexible Self Levelling Floor Compound

- Apply from 2 – 50mm in one pour
- Fast setting, tile after 3 hours
- Ideal for underfloor heating systems
- Ideal for timber substrates *
- Apply directly to T & G floorboards *
- Single part, simply mix with water
- Protein free
- Pump-able

* Minimum application depth on timber substrates of 4mm.



FlexiLevel is a fast setting, flexible, fibre reinforced and protein free cement based formulation designed for smoothing and levelling subfloors prior to the installation of floor coverings. FlexiLevel can be applied from depths of 2mm – 50mm in one application and it is suitable for use on all common substrates including underfloor heating systems and timber substrates – the minimum application depth on timber substrates is 4mm. FlexiLevel is fast setting and therefore ceramic, porcelain and natural stone tiles can be applied after 3 hours and impervious floor finishes such as decorative vinyl after 24 hours.

SUBSTRATES:

- ✓ Sand/Cement Screed
- ✓ Concrete
- ✓ Plywood Overlay (12mm min)*
- ✓ Electric Underfloor Heating
- ✓ Water/Wet System Underfloor Heating
- ✓ Tile Backer Boards
- ✓ Existing Ceramic, Porcelain and Natural Stone Tiles
- ✓ Flooring Grade Asphalt & Bitumen

- ✓ Anhydrite Screeds
- ✓ Fibre Cement Sheet
- ✓ T & G Floorboards*
- ✓ Floating Floors*
- ✓ Existing Vinyl Tiles
- ✓ Steel/Metal Surfaces
- ✓ Fibreglass
- ✗ Green Screed



When primed with Prime+Grip

* Minimum application depth on timber substrates is 4mm

Water Addition:	5.5 - 6.0 litres of water to 25kg FlexiLevel
Coverage:	25kg will cover 5.25m ² at a depth of 3mm
Working Time:	Once poured, FlexiLevel remains workable for approx. 20 minutes
Drying Time:	Light foot traffic after 2 – 3 hours
Ready for Covering:	Tile after 3 hours
Application Temperature:	+5°C to +30°C
Pack Sizes:	25kg
Colour:	Grey



FLOOR LEVELLERS

Rapid Level 30

Ultra-Rapid Setting
Flexible Self Levelling
Floor Compound

- Light foot traffic after 30 minutes
- Tile after 45 – 60 minutes
- Ideal for underfloor heating systems
- Ideal for timber substrates
- Apply from 2 – 15mm in one pour
- Apply impervious floor finishes after 90 minutes
- Excellent self levelling properties
- Simply mix with water
- Protein free
- Contains Advanced Binder Technology



Rapid Level 30 is an ultra-rapid setting and drying, flexible self levelling floor compound. It has been specially formulated using advanced binder technology and selected additives to provide an underlayment which is ideal for when a genuine, fast-track solution is required. At 20°C, Rapid Level 30 can be walked on after 30 minutes and it is ready to receive ceramic, porcelain and natural stone tiles after 45 – 60 minutes. Impervious floor coverings such as decorative vinyl and linoleum can be applied after 90 minutes. Rapid Level 30 can be applied from depths of 2 – 15mm in one application and it is suitable for use on all common substrates including underfloor heating systems and timber substrates. Rapid Level 30 is ideal for encapsulating electric underfloor heating elements prior to the application of tiles and/or soft flooring.

SUBSTRATES:

- | | |
|---|------------------------|
| ✓ Sand/Cement Screed | ✓ Anhydrite Screeds |
| ✓ Concrete | ✓ Fibre Cement Sheet |
| ✓ Plywood Overlay (6mm min) | ✗ T & G Floorboards |
| ✓ Electric Underfloor Heating | ✗ Floating Floors |
| ✓ Water/Wet System Underfloor Heating | ✓ Existing Vinyl Tiles |
| ✓ Tile Backer Boards | ✗ Steel/Metal Surfaces |
| ✓ Existing Ceramic, Porcelain and Natural Stone Tiles | ✗ Fibreglass |
| ✗ Flooring Grade Asphalt & Bitumen | ✗ Green Screed |

- Water Addition:** 4.5 - 5.0 litres of water to 20kg Rapid Level 30
- Coverage:** 20kg will cover 4.2m² at a depth of 3mm
- Working Time:** Once poured, Rapid Level 30 remains workable for 10 - 15 minutes
- Drying Time:** Light foot traffic after 30 minutes
- Ready for Covering:** Tile after 45 – 60 minutes. Apply soft flooring such as vinyl after 90 minutes
- Application Temperature:** +5°C to +30°C
- Pack Sizes:** 20kg
- Colour:** Beige



FLOOR LEVELLERS

Trade Flow

Multi-Purpose Two Part Smoothing Compound

- Apply from 2 – 12mm in one pour
- Excellent flow and smoothing properties
- Light foot traffic after 2 hours
- Install tiles after 4 hours & decorative floor coverings after 12 hours
- Moisture tolerant
- Ideal for underfloor heating systems
- Suitable for plywood overlay substrates
- Low odour
- Protein free



Trade Flow is a multi-purpose, latex based two component smoothing compound, consisting of a specially formulated powder component that is mixed with a pre-gauged, protein free polymer component liquid. Trade Flow has excellent flow properties making it suitable for a wide range of both commercial and domestic applications. Trade Flow is suitable for use over a wide range of substrates including those subject to limited movement and/or vibration such as plywood overlay and underfloor heating systems as well as for solid substrates such as concrete and sand/cement screed. Once mixed, Trade Flow will remain workable for 20 – 25 minutes and it will accept light foot traffic after 2 hours in ideal conditions. Tiles can be applied after 4 hours and decorative floor coverings can be installed after 12 hours. Trade Flow can be applied from depths of 2 – 12mm in one application.

SUBSTRATES:

- | | |
|---|-------------------------|
| ✓ Sand/Cement Screed | ✗ T & G Floorboards |
| ✓ Concrete | ✗ Floating Floors |
| ✓ Plywood Overlay (15mm min) | ✓ Fibre Cement Sheet |
| ✓ Electric Underfloor Heating | ✓ Existing Vinyl Tiles* |
| ✓ Water/Wet System Underfloor Heating | ✓ Steel/Metal Surfaces* |
| ✓ Tile Backer Boards | ✓ Fibreglass* |
| ✓ Existing Ceramic, Porcelain and Natural Stone Tiles | ✓ Green Screed |
| ✓ Flooring Grade Asphalt & Bitumen | |
| ✓ Anhydrite Screeds | |

* When primed with Prime + Grip



Coverage:	20kg will cover 5m ² at a depth of 3mm
Working Time:	Once poured, Trade Flow remains workable for approx. 20 minutes
Drying Time:	Light foot traffic after 2 hours
Ready for Covering:	Tile after 4 hours. Install soft flooring such as vinyl after 12 hours
Application Temperature:	+5°C to +30°C
Pack Sizes:	20kg bag with 5L of liquid
Colour:	Grey



FLOOR LEVELLERS

Pro Flow

High Performance Two Part Smoothing Compound

- Apply from 2 – 12mm in one pour
- Walk on after 90 minutes
- Install tiles after 3 hours & decorative floor coverings after 4 hours
- Suitable for use over old adhesive residues including bitumen
- Moisture tolerant – can be used below a DPM
- Excellent adhesion properties without priming most substrates
- Ideal for underfloor heating systems
- Ideal for plywood overlay substrates
- Low odour
- Protein free



Pro Flow is a rapid setting, high performance latex based two part smoothing compound consisting of a specially formulated powder component that is mixed with a pre-gauged, protein free and high polymer content liquid. It has excellent flow and adhesion properties and these unique properties ensure that Pro Flow can be used with confidence without the need to prime the large majority of substrates. Pro Flow is suitable for use over a wide range of substrates including those subject to limited movement and/or vibration such as plywood overlay and underfloor heating systems as well as for solid substrates such as concrete and sand/cement screed. The product is also moisture tolerant which means it can be used to level floors where no damp proof membrane is present. Once mixed, Pro Flow will remain workable for 20 – 25 minutes and it will accept light foot traffic after 90 minutes in ideal conditions. Tiles can be applied after 3 hours and decorative floor coverings can be installed after 4 hours. Pro Flow can be applied from depths of 2 – 12mm in one application.

SUBSTRATES:

- | | |
|---|------------------------------|
| ✓ Sand/Cement Screed | ✗ T & G Floorboards |
| ✓ Concrete | ✗ Floating Floors |
| ✓ Plywood Overlay (6mm min) | ✓ Existing Vinyl Tiles |
| ✓ Electric Underfloor Heating | ✓ Steel/Metal Surfaces |
| ✓ Water/Wet System Underfloor Heating | ✓ Epoxy DPM* |
| ✓ Tile Backer Boards | ✓ Existing Adhesive Residues |
| ✓ Existing Ceramic, Porcelain and Natural Stone Tiles | ✓ Green Screed |
| ✓ Flooring Grade Asphalt & Bitumen | ✓ Fibreglass* |
| ✓ Anhydrite Screeds | |

* When primed with Prime + Grip



Coverage:	20kg will cover 5m ² at a depth of 3mm
Working Time:	Once poured, Pro Flow remains workable for approx. 20 minutes
Drying Time:	Light foot traffic after 90 minutes
Ready for Covering:	Tile after 3 hours. Install soft flooring such as vinyl after 4 hours
Application Temperature:	+5°C to +30°C
Pack Sizes:	20kg bag with 5L of liquid
Colour:	Grey



FLOOR LEVELLERS

AnhyLevel

Gypsum Based Flexible Self Levelling Floor Compound

- Developed specially for application to anhydrite & calcium sulphate screeds
- Ideal for underfloor heating systems
- Apply from 2 – 20mm in one application
- Fast drying-light foot traffic after 3 hours
- 100% compatible with gypsum based substrates
- Excellent self levelling properties
- Protein free
- **AnhyFix adhesive must be used when fixing tiles to AnhyLevel**



AnhyLevel is a gypsum based, flexible self levelling floor compound designed for smoothing and levelling subfloors prior to the installation of floor coverings. AnhyLevel has been specifically developed for direct application to gypsum based substrates such as anhydrite screed and calcium sulphate screed without the need to apply a barrier primer. AnhyLevel can be applied from depths of 2 – 20mm in one application. AnhyLevel is flexible and it is suitable for use with underfloor heating systems. AnhyLevel is fast setting and it will accept light foot traffic after 2 - 3 hours. Finished flooring can be applied after 24 hours, however, this is dependent on the application depth and ambient conditions.

SUBSTRATES:

- | | |
|---|------------------------|
| ✘ Sand/Cement Screed | ✓ Anhydrite Screeds |
| ✘ Concrete | ✘ Fibre Cement Sheet |
| ✓ Plywood Overlay (6mm min) | ✘ T & G Floorboards |
| ✓ Electric Underfloor Heating | ✘ Floating Floors |
| ✓ Water/Wet System Underfloor Heating | ✓ Existing Vinyl Tiles |
| ✓ Tile Backer Boards | ✘ Steel/Metal Surfaces |
| ✓ Existing Ceramic, Porcelain and Natural Stone Tiles | ✘ Fibreglass |
| ✓ Flooring Grade Asphalt & Bitumen | ✘ Green Screed |

- Water Addition:** 4.6 – 5.2 litres of water to 20kg AnhyLevel
- Coverage:** 20kg will cover 4.5m² at a depth of 3mm
- Working Time:** Once poured, AnhyLevel remains workable for approx. 20 minutes
- Drying Time:** Light foot traffic after 2 – 3 hours
- Ready for Covering:** From 24 hours depending on application depth
- Application Temperature:** +5°C to +30°C
- Colours:** Off White
- Pack Sizes:** 20kg



Anhyfix

Gypsum Based Flexible Rapid Setting Floor & Wall Tile Adhesive

- Developed specially for fixing tiles to anhydrite & calcium sulphate screeds
- Ideal for underfloor heating systems
- Fixes ceramic, porcelain & natural stone tiles
- Walk on and grout after 3 hours
- 100% compatible with gypsum based substrates
- 3mm – 12mm bed depth
- Grout with Grout 3000 or Flexigrout



AnhyFix is a gypsum based, polymer modified, flexible rapid setting floor and wall tile adhesive. AnhyFix has been specifically formulated for fixing a large variety of tiles including ceramic, porcelain and natural stone tiles to gypsum based substrates such as anhydrite screed and calcium sulphate screed without the need to apply a barrier primer. AnhyFix is a flexible adhesive which is ideal for fixing tiles to underfloor heating systems. Its rapid setting capability allows for light foot traffic and grouting after 3 hours. **Even though AnhyFix is gypsum based, tiles can be grouted using cement based grout such as Tilemaster Grout 3000 and FlexiGrout.**

AnhyFix cannot be used externally and it is not suitable for use in wet areas such as showers, wet rooms and swimming pools.

TILES:

- ✓ Ceramics
- ✓ Porcelain
- ✓ Marble
- ✓ Travertine
- ✓ Limestone
- ✓ Slate
- ✗ Quartz
- ✓ Granite
- ✗ Composite
- ✓ Terracotta
- ✓ Mosaics
- ✓ Quarry

SUBSTRATES:

- | | |
|--|---|
| <ul style="list-style-type: none"> ✗ Sand/Cement Screed ✗ Concrete ✓ Plywood Overlay (12mm min) ✓ Electric Underfloor Heating ✓ Water/Wet System Underfloor Heating ✗ Tile Backer Boards ✗ Existing Ceramic, Porcelain and Natural Stone Tiles ✓ Flooring Grade Asphalt & Bitumen ✓ Anhydrite Screeds | <ul style="list-style-type: none"> ✓ Plaster ✓ Plasterboard ✗ Fibre Cement Sheet ✗ Cement/Sand Render ✗ Concrete Brick/Block ✗ T & G Floorboards ✗ Floating Floors ✓ Existing Vinyl Tiles ✗ Steel/Metal Surfaces ✗ Fibreglass ✗ Green Screed |
|--|---|

Water Addition:

4.8 – 5.2 litres of water to 20kg AnhyFix

Coverage:

20kg will cover 5 – 6m² at 3mm thin bed application

Pot Life at 20°C:

Approximately 45 - 60 minutes

Grout After:

3 hours

Application Temperature:

+5°C to +30°C

Colours:

Off White

Pack Sizes:

20kg



Rapid Set

Rapid Setting Floor & Wall Tile Adhesive

- Developed for fixing porous tiles such as ceramic tiles
- For use on solid substrates only
- Walk on and grout after 3 hours
- Improved slip resistance
- 3mm – 12mm bed depth
- Internal and external use



Rapid Set is a rapid setting cement based floor and wall tile adhesive with improved slip resistance. Rapid Set has been developed for fixing porous tiles such as ceramic, quarry and terracotta tiles to solid substrates such as sand/cement screed and concrete. Its rapid setting capability allows for light foot traffic and grouting after 3 hours. Rapid Set can be used internally and externally and it is unaffected by frost after setting.

When mixed with Flexmaster Additive, Rapid Set is suitable for fixing a wider variety of tiles to a wider variety of substrates.

TILES:

- ✓ Ceramics
- ✗ Porcelain
- ✗ Marble
- ✗ Travertine
- ✗ Limestone
- ✗ Slate
- ✗ Quartz
- ✗ Granite
- ✗ Composite
- ✓ Terracotta
- ✗ Mosaics
- ✓ Quarry

SUBSTRATES:

- | | |
|---|---|
| <ul style="list-style-type: none"> ✓ Sand/Cement Screed ✓ Concrete ✗ Plywood Overlay ✗ Electric Underfloor Heating ✗ Water/Wet System Underfloor Heating ✓ Tile Backer Boards ✗ Existing Ceramic, Porcelain and Natural Stone Tiles ✗ Flooring Grade Asphalt & Bitumen ✗ Anhydrite Screeds | <ul style="list-style-type: none"> ✓ Plaster ✗ Plasterboard ✗ Fibre Cement Sheet ✗ Cement/Sand Render ✓ Concrete Brick/Block ✗ T & G Floorboards ✗ Floating Floors ✗ Existing Vinyl Tiles ✗ Steel/Metal Surfaces ✗ Fibreglass ✗ Green Screed |
|---|---|

Water Addition:

Approximately 4.6 litres of water to 20kg Rapid Set

Coverage:

20kg will cover 5 – 6m² at 3mm thin bed application

Pot Life at 20°C:

Approximately 30 - 45 minutes

Grout After:

3 hours

Application Temperature: +5°C to +30°C

Colours:

Grey

Pack Sizes:

20kg



Rapid Extrabond

Rapid Setting Polymer Modified Floor & Wall Tile Adhesive

- Developed for fixing ceramic, porcelain and natural stone tiles
- Polymer modified for increased adhesion
- Excellent workability and non-slip properties
- Suitable for commercial and heavy traffic environments
- Walk on and grout after 3 hours
- 3mm – 12mm bed depth
- Internal & external use



Rapid Extrabond is a rapid setting, polymer modified cement based floor and wall tile adhesive with increased adhesion and non-slip properties. Rapid Extrabond has been specially formulated for fixing a large variety of tiles including ceramic, porcelain and natural stone tiles to solid substrates such as sand/cement screed and concrete. Its rapid setting capability allows for light foot traffic and grouting after 3 hours. Rapid Extrabond can be used internally and externally and it is unaffected by frost after setting.

When mixed with Flexmaster Additive, Rapid Extrabond is suitable for fixing to a wider variety of substrates.

TILES:

- ✓ Ceramics
- ✓ Porcelain
- ✓ Marble
- ✓ Travertine
- ✓ Limestone
- ✓ Slate
- ✗ Quartz
- ✓ Granite
- ✗ Composite
- ✓ Terracotta
- ✓ Mosaics
- ✓ Quarry

SUBSTRATES:

- | | |
|---|---|
| <ul style="list-style-type: none"> ✓ Sand/Cement Screed ✓ Concrete ✗ Plywood Overlay ✗ Electric Underfloor Heating ✗ Water/Wet System Underfloor Heating ✓ Tile Backer Boards ✓ Existing Ceramic, Porcelain and Natural Stone Tiles ✗ Flooring Grade Asphalt & Bitumen ✗ Anhydrite Screeds | <ul style="list-style-type: none"> ✓ Plaster ✓ Plasterboard ✓ Fibre Cement Sheet ✓ Cement/Sand Render ✓ Concrete Brick/Block ✗ T & G Floorboards ✗ Floating Floors ✗ Existing Vinyl Tiles ✗ Steel/Metal Surfaces ✗ Fibreglass ✗ Green Screed |
|---|---|

Water Addition:

4.4 – 4.6 litres of water to 20kg Rapid Extrabond

Coverage:

20kg will cover 5 – 6m² at 3mm thin bed application

Pot Life at 20°C:

Approximately 30 - 45 minutes

Grout After:

3 hours

Application Temperature:

+5°C to +30°C

Colours:

Grey & White

Pack Sizes:

20kg



Thick Bed FlexiRapid

Pourable & Flexible Rapid Setting Floor Tile Adhesive



- 3mm – 25mm bed depth
- Developed for solid bed fixing of large format tiles
- Ideal for ceramic, porcelain, terrazzo and natural stone tiles
- Pourable and flexible
- Rapid setting, grout after 3 hours
- Ideal for uneven tiles and uneven surfaces
- Suitable for use over underfloor heating systems
- Ideal for plywood overlay substrates
- Internal and external use

Thick Bed FlexiRapid is a pourable and flexible rapid setting cement based floor tile adhesive. Thick Bed FlexiRapid has been specially developed for the solid bed fixing of a wide range of large format tiles such as ceramic, porcelain, terrazzo and natural stone tiles. Thick Bed FlexiRapid can be applied up to a bed thickness of 25mm. It is ideal for fixing tiles of uneven thicknesses, for fixing to uneven surfaces and it can also be used to level uneven floors. A fast track adhesive, the rapid setting properties of Thick Bed FlexiRapid allow for light foot traffic and grouting after 3 hours. Thick Bed FlexiRapid is ideal for use in areas subject to prolonged or permanent wet conditions such as wet rooms and swimming pools. The product can be used internally and externally and it is unaffected by frost after setting.

TILES:

- ✓ Ceramics
- ✓ Porcelain
- ✓ Marble
- ✓ Travertine
- ✓ Limestone
- ✓ Slate
- ✗ Quartz
- ✓ Granite
- ✗ Composite
- ✓ Terracotta
- ✓ Mosaics
- ✓ Quarry

SUBSTRATES:

- | | |
|--|---|
| <ul style="list-style-type: none"> ✓ Sand/Cement Screed ✓ Concrete ✓ Plywood Overlay (15mm min) ✓ Electric Underfloor Heating ✓ Water/Wet System Underfloor Heating ✓ Tile Backer Boards ✓ Existing Ceramic, Porcelain and Natural Stone Tiles ✓ Flooring Grade Asphalt & Bitumen ✓ Anhydrite Screeds | <ul style="list-style-type: none"> ✗ Plaster ✗ Plasterboard ✓ Fibre Cement Sheet ✗ Cement/Sand Render ✗ Concrete Brick/Block ✗ T & G Floorboards ✗ Floating Floors ✓ Existing Vinyl Tiles ✗ Steel/Metal Surfaces ✗ Fibreglass ✗ Green Screed |
|--|---|

Water Addition:

3.4 – 4.0 litres of water to 20kg Thick Bed FlexiRapid

Coverage:

20kg will cover 5m² at 3mm thin bed application

Pot Life at 20°C:

Approximately 30 – 45 minutes

Grout After:

3 hours

Application Temperature:

+5°C to +30°C

Colours:

Grey & White

Pack Sizes:

20kg



Trade FlexiRapid

Flexible Rapid Setting Floor & Wall Tile Adhesive



- Ideal for fixing to plywood overlay substrates
- Ideal for underfloor heating systems
- Fixes ceramic, porcelain and natural stone tiles
- Walk on and grout after 3 hours
- Improved slip resistance
- 3mm – 12mm bed depth
- Internal and external use
- Suitable for use in commercial and heavy traffic environments

Trade FlexiRapid is a polymer modified, flexible rapid setting cement based floor and wall tile adhesive with increased adhesion and non-slip properties. Trade FlexiRapid has been specially formulated for fixing a large variety of tiles including ceramic, porcelain and natural stone tiles to well prepared substrates that may be subject to limited movement and/or vibration such as plywood overlay and underfloor heating systems as well as for fixing to solid substrates such as concrete and sand/cement screed. Its rapid setting capability allows for light foot traffic and grouting after 3 hours. Trade FlexiRapid can be used internally and externally and it is unaffected by frost after setting.

TILES:

- ✓ Ceramics
- ✓ Porcelain
- ✓ Marble
- ✓ Travertine
- ✓ Limestone
- ✓ Slate
- ✗ Quartz
- ✓ Granite
- ✗ Composite
- ✓ Terracotta
- ✓ Mosaics
- ✓ Quarry

SUBSTRATES:

- | | |
|--|---|
| <ul style="list-style-type: none"> ✓ Sand/Cement Screed ✓ Concrete ✓ Plywood Overlay (15mm min) ✓ Electric Underfloor Heating ✓ Water/Wet System Underfloor Heating ✓ Tile Backer Boards ✓ Existing Ceramic, Porcelain and Natural Stone Tiles ✓ Flooring Grade Asphalt & Bitumen ✓ Anhydrite Screeds | <ul style="list-style-type: none"> ✓ Plaster ✓ Plasterboard ✓ Fibre Cement Sheet ✓ Cement/Sand Render ✓ Concrete Brick/Block ✗ T & G Floorboards ✗ Floating Floors ✓ Existing Vinyl Tiles ✗ Steel/Metal Surfaces ✗ Fibreglass ✗ Green Screed |
|--|---|

Water Addition:

4.2 – 4.6 litres of water to 20kg Trade FlexiRapid

Coverage:

20kg will cover 5 – 6m² at 3mm thin bed application

Pot Life at 20°C:

Approximately 30 - 45 minutes

Grout After:

3 hours

Application Temperature:

+5°C to +30°C

Colours:

Grey & White

Pack Sizes:

20kg



Light Weight Rapid



> 60% EXTRA COVERAGE



Flexible Rapid Setting Floor & Wall Tile Adhesive

- Greater than 60% extra coverage over traditional sand/cement adhesives
- Fantastic non-slip properties
- Minimum of 50% lighter per m²
- Contains 20% recycled material
- Ideal for plywood overlay
- Ideal for underfloor heating systems
- Fixes ceramic, porcelain and natural stone tiles
- Walk on and grout after 3 hours
- 3mm - 12mm bed depth



Light Weight Rapid Set is a polymer modified, flexible rapid setting cement based floor and wall tile adhesive. Light Weight Rapid is made using specially formulated lightweight fillers and additives to produce excellent non-slip properties, improved workability, higher yield and >60% extra coverage over traditional sand/cement based adhesives. Light Weight Rapid has been formulated for fixing a large variety of tiles including ceramic, porcelain and natural stone tiles to all types of substrate including those subject to limited movement and/or vibration such as plywood overlay, timber framework and underfloor heating systems as well as for fixing to solid substrates such as concrete and sand/cement screed. Its rapid setting capability allows for light foot traffic and grouting after 3 - 4 hours. Light Weight Rapid can be used internally and externally and it is unaffected by frost after setting.

TILES:

- ✓ Ceramics
- ✓ Porcelain
- ✓ Marble
- ✓ Travertine
- ✓ Limestone
- ✓ Slate
- ✗ Quartz
- ✓ Granite
- ✗ Composite
- ✓ Terracotta
- ✓ Mosaics
- ✓ Quarry

SUBSTRATES:

- ✓ Sand/Cement Screed
- ✓ Concrete
- ✓ Plywood Overlay (12mm min)
- ✓ Electric Underfloor Heating
- ✓ Water/Wet System Underfloor Heating
- ✓ Tile Backer Boards
- ✓ Existing Ceramic, Porcelain and Natural Stone Tiles
- ✓ Flooring Grade Asphalt & Bitumen
- ✓ Anhydrite Screeds

- ✓ Plaster
- ✓ Plasterboard
- ✓ Fibre Cement Sheet
- ✓ Cement/Sand Render
- ✓ Concrete Brick/Block
- ✗ T & G Floorboards
- ✗ Floating Floors
- ✓ Existing Vinyl Tiles
- ✗ Steel/Metal Surfaces
- ✗ Fibreglass
- ✗ Green Screed

Water Addition:

8 – 9 litres of water to 15kg Light Weight Rapid

Coverage:

15kg will cover 9 - 11m² at 3mm thin bed application

Pot Life at 20°C:

Approximately 45 – 60 minutes

Grout After:

3 - 4 hours

Application Temperature:

+5°C to +30°C

Colours:

White

Pack Sizes:

15kg



Rapid Setaflex



Flexible Rapid Setting Floor & Wall Tile Adhesive

- **Genuine S1 flexibility makes Setaflex suitable for a wide range of tiles and substrates**
- **Ideal for timber substrates**
- **Ideal for underfloor heating systems**
- **Fixes ceramic, porcelain and natural stone tiles**
- **Walk on and grout after 3 hours**
- **Improved slip resistance**
- **3mm – 12mm bed depth**
- **Internal and external use**

Rapid Setaflex is a polymer modified, flexible rapid setting cement based floor and wall tile adhesive with increased adhesion and non-slip properties. Rapid Setaflex has been specially formulated for fixing a large variety of tiles including ceramic, porcelain and natural stone tiles to substrates subject to limited movement and/or vibration such as plywood overlay and underfloor heating systems as well as for fixing to solid substrates such as concrete and sand/cement screed. Its rapid setting capability allows for light foot traffic and grouting after 3 hours. Rapid Setaflex is ideal for areas subject to prolonged or permanent wet conditions such as swimming pools. Rapid Setaflex can be used internally and externally and it is unaffected by frost after setting.



TILES:

- ✓ Ceramics
- ✓ Porcelain
- ✓ Marble
- ✓ Travertine
- ✓ Limestone
- ✓ Slate
- ✗ Quartz
- ✓ Granite
- ✗ Composite
- ✓ Terracotta
- ✓ Mosaics
- ✓ Quarry

SUBSTRATES:

- ✓ Sand/Cement Screed
- ✓ Concrete
- ✓ Plywood Overlay (12mm min)
- ✓ Electric Underfloor Heating
- ✓ Water/Wet System Underfloor Heating
- ✓ Tile Backer Boards
- ✓ Existing Ceramic, Porcelain and Natural Stone Tiles
- ✓ Flooring Grade Asphalt & Bitumen
- ✓ Anhydrite Screeds

- ✓ Plaster
- ✓ Plasterboard
- ✓ Fibre Cement Sheet
- ✓ Cement/Sand Render
- ✓ Concrete Brick/Block
- ✗ T & G Floorboards
- ✗ Floating Floors
- ✓ Existing Vinyl Tiles
- ✗ Steel/Metal Surfaces
- ✗ Fibreglass
- ✗ Green Screed

Water Addition:

4.4 – 4.6 litres of water to 20kg Rapid Setaflex

Coverage:

20kg will cover 5 – 6m² at 3mm thin bed application

Pot Life at 20°C:

Approximately 30 - 45 minutes

Grout After:

3 hours

Application Temperature:

+5°C to +30°C

Colours:

Grey & White

Pack Sizes:

5kg, 10kg & 20kg



Ultimate



Highly Flexible Rapid Setting Floor & Wall Tile Adhesive

- Ideal for timber substrates
- Suitable for floating floors
- Use on green screed
- Ideal for underfloor heating systems
- Bonds to metal surfaces
- Fixes ceramic, porcelain and natural stone tiles
- Suitable for commercial and heavy traffic environments
- 3mm – 15mm bed depth
- Internal and external use



Ultimate is a high specification, highly flexible (S2) and rapid setting cement based floor and wall tile adhesive. Developed for fixing to difficult substrates, Ultimate is ideal when fixing to surfaces subject to limited movement and/or vibration as well as for fixing to solid substrates such as concrete and sand/cement screed. A fast track adhesive, Ultimate can be used on green screeds. Ultimate is suitable for fixing a large variety of tiles to a large variety of substrates as listed below. Its rapid setting capability allows for light foot traffic and grouting after 3 hours. Ultimate is ideal for areas subject to prolonged or permanent wet conditions such as swimming pools. Ultimate can be used internally and externally and it is unaffected by frost after setting.

Ultimate is designed to fix tiles to surfaces subject to movement and/or vibration. Some types of tiles may not have the structure to absorb movement without cracking, please consult with the supplier of the tiles regarding this matter.

TILES:

- ✓ Ceramics
- ✓ Porcelain
- ✓ Marble
- ✓ Travertine
- ✓ Limestone
- ✓ Slate
- ✓ Quartz
- ✓ Granite
- ✓ Composite
- ✓ Terracotta
- ✓ Mosaics
- ✓ Quarry

SUBSTRATES:

- | | |
|---|---|
| <ul style="list-style-type: none"> ✓ Sand/Cement Screed ✓ Concrete ✓ Plywood Overlay (6mm) ✓ Electric Underfloor Heating ✓ Water/Wet System Underfloor Heating ✓ Tile Backer Boards ✓ Existing Ceramic, Porcelain and Natural Stone Tiles ✓ Flooring Grade Asphalt & Bitumen ✓ Anhydrite Screeds | <ul style="list-style-type: none"> ✓ Plaster ✓ Plasterboard ✓ Fibre Cement Sheet ✓ Cement/Sand Render ✓ Concrete Brick/Block ✓ T & G Floorboards ✓ Floating Floors ✓ Existing Vinyl Tiles ✓ Steel/Metal Surfaces ✓ Fibreglass ✓ Green Screed |
|---|---|

Water Addition:

3.6 – 3.8 litres of water to 20kg Ultimate

Coverage:

20kg will cover 5 – 6m² at 3mm thin bed application

Pot Life at 20°C:

Approximately 30 - 45 minutes

Grout After:

3 hours

Application Temperature:

+5°C to +30°C

Colours:

Grey & White

Pack Sizes:

20kg



Setaflex Semi-Rapid



Flexible Semi-Rapid Setting Floor & Wall Tile Adhesive

- **Genuine S1 flexibility makes Setaflex suitable for a wide range of tiles and substrates**
- **Bucket life of 90 – 120 minutes**
- **Walk on and grout after 6 hours**
- **Ideal for timber substrates**
- **Ideal for underfloor heating systems**
- **Fixes ceramic, porcelain and natural stone tiles**
- **3mm – 12mm bed depth**
- **Internal and external use**
- **Ideal for use with natural stone tiles**



Setaflex Semi-Rapid is a polymer modified, flexible cement based floor and wall tile adhesive that has been specially developed to give an extended pot life of 90 – 120 minutes. Setaflex Semi-Rapid has been developed for fixing a large variety of tiles such as ceramic, porcelain and natural stone tiles and the extended pot life is ideal when fixing large format and intricate tiles such as natural stone. The adhesive is fast setting and it will accept light foot traffic and grouting after 6 hours. Setaflex Semi-Rapid is a flexible adhesive and it is ideal for fixing to substrates with limited movement and/or vibration such as plywood overlay and underfloor heating systems as well as for fixing to solid substrates such as concrete and sand/cement screed. Setaflex Semi-Rapid is ideal for use in areas subject to prolonged or permanent wet conditions such as wet rooms and swimming pools. The product can be used internally and externally and it is unaffected by frost after setting.

Please note – Setaflex Semi-Rapid is suitable for use with natural stone tiles but suitability with very porous and sensitive natural stone must be tested before use.

TILES:

- ✓ Ceramics
- ✓ Porcelain
- ✓ Marble
- ✓ Travertine
- ✓ Limestone
- ✓ Slate
- ✗ Quartz
- ✓ Granite
- ✗ Composite
- ✓ Terracotta
- ✓ Mosaics
- ✓ Quarry

SUBSTRATES:

- | | |
|--|---|
| <ul style="list-style-type: none"> ✓ Sand/Cement Screed ✓ Concrete ✓ Plywood Overlay (12mm min) ✓ Electric Underfloor Heating ✓ Water/Wet System Underfloor Heating ✓ Tile Backer Boards ✓ Existing Ceramic, Porcelain and Natural Stone Tiles ✓ Flooring Grade Asphalt & Bitumen ✓ Anhydrite Screeds | <ul style="list-style-type: none"> ✓ Plaster ✓ Plasterboard ✓ Fibre Cement Sheet ✓ Cement/Sand Render ✓ Concrete Brick/Block ✗ T & G Floorboards ✗ Floating Floors ✓ Existing Vinyl Tiles ✗ Steel/Metal Surfaces ✗ Fibreglass ✗ Green Screed |
|--|---|

Water Addition:

4.4 – 4.6 litres of water to 20kg Setaflex Semi-Rapid

Coverage:

20kg will cover 5 – 6m² at 3mm thin bed application

Pot Life at 20°C:

90 – 120 minutes

Grout After:

6 hours

Application Temperature:

+5°C to +30°C

Colours:

Grey & White

Pack Sizes:

20kg



Standard Set

Standard Setting Wall & Floor Tile Adhesive

- **Bucket life of 3 – 4 hours - ideal where longer working times are required**
- **Developed for fixing porous tiles such as ceramic tiles**
- **For use on solid substrates only**
- **Improved slip resistance**
- **3mm – 12mm bed depth**
- **Internal and external use**



Standard Set is a standard setting cement based wall and floor tile adhesive with improved slip resistance and an extended open time. Standard Set has been developed for fixing porous tiles such as ceramic, quarry and terracotta tiles to solid substrates such as sand/cement screed, concrete, brick/block and plaster. Formulated to give an extended bucket life of approximately 3 hours, Standard Set is ideal where longer working times are required. Standard Set can be used internally and externally and it is unaffected by frost after setting.

When mixed with Flexmaster Additive, Standard Set is suitable for fixing a wider variety of tiles to a wider variety of substrates.

TILES:

- ✓ Ceramics
- ✗ Porcelain
- ✗ Marble
- ✗ Travertine
- ✗ Limestone
- ✗ Slate
- ✗ Quartz
- ✗ Granite
- ✗ Composite
- ✓ Terracotta
- ✗ Mosaics
- ✓ Quarry

SUBSTRATES:

- | | |
|---|---|
| <ul style="list-style-type: none"> ✓ Sand/Cement Screed ✓ Concrete ✗ Plywood Overlay ✗ Electric Underfloor Heating ✗ Water/Wet System Underfloor Heating ✓ Tile Backer Boards ✗ Existing Ceramic, Porcelain and Natural Stone Tiles ✗ Flooring Grade Asphalt & Bitumen ✗ Anhydrite Screeds | <ul style="list-style-type: none"> ✓ Plaster ✗ Plasterboard ✗ Fibre Cement Sheet ✗ Cement/Sand Render ✓ Concrete Brick/Block ✗ T & G Floorboards ✗ Floating Floors ✗ Existing Vinyl Tiles ✗ Steel/Metal Surfaces ✗ Fibreglass ✗ Green Screed |
|---|---|

Water Addition:

4.4 – 4.6 litres of water to 20kg Standard Set

Coverage:

20kg will cover 5 – 6m² at 3mm thin bed application

Pot Life at 20°C:

Approximately 3 – 4 hours

Grout After:

24 hours

Application Temperature:

+5°C to +30°C

Colours:

Grey & White

Pack Sizes:

20kg



Standard Set Extrabond

Standard Setting Polymer Modified Wall & Floor Tile Adhesive

- Developed for fixing ceramic, porcelain and natural stone tiles
- Polymer modified for increased adhesion
- Excellent workability and non-slip properties
- Bucket life of 3 – 4 hours
- 3mm – 12mm bed depth
- Internal and external use



Standard Set Extrabond is a standard setting, polymer modified cement based wall and floor tile adhesive with increased adhesion and non-slip properties. Standard Set Extrabond has been specially formulated for fixing a large variety of tiles including ceramic, porcelain and natural stone tiles to solid substrates such as sand/cement screed, concrete, brick/block and plaster. Formulated to give an extended bucket life of approximately 3 hours, Standard Set Extrabond is ideal where longer working times are required. Standard Set Extrabond is ideal for areas subject to prolonged wet conditions such as showers and wet rooms. Standard Set Extrabond can be used internally and externally and it is unaffected by frost after setting.

When mixed with Flexmaster Additive, Standard Set Extrabond is suitable for fixing to a wider variety of substrates.

TILES:

- ✓ Ceramics
- ✓ Porcelain
- ✓ Marble
- ✓ Travertine
- ✓ Limestone
- ✓ Slate
- ✗ Quartz
- ✓ Granite
- ✗ Composite
- ✓ Terracotta
- ✓ Mosaics
- ✓ Quarry

SUBSTRATES:

- | | |
|---|---|
| <ul style="list-style-type: none"> ✓ Sand/Cement Screed ✓ Concrete ✗ Plywood Overlay ✗ Electric Underfloor Heating ✗ Water/Wet System Underfloor Heating ✓ Tile Backer Boards ✓ Existing Ceramic, Porcelain and Natural Stone Tiles ✗ Flooring Grade Asphalt & Bitumen ✗ Anhydrite Screeds | <ul style="list-style-type: none"> ✓ Plaster ✓ Plasterboard ✓ Fibre Cement Sheet ✓ Cement/Sand Render ✓ Concrete Brick/Block ✗ T & G Floorboards ✗ Floating Floors ✓ Existing Vinyl Tiles ✗ Steel/Metal Surfaces ✗ Fibreglass ✗ Green Screed |
|---|---|

Water Addition:

4.4 – 4.6 litres of water to 20kg Standard Set Extrabond

Coverage:

20kg will cover 5 – 6m² at 3mm thin bed application

Pot Life at 20°C:

Approximately 3 – 4 hours

Grout After:

24 hours

Application Temperature:

+5°C to +30°C

Colours:

Grey & White

Pack Sizes:

20kg



Standard Set Setaflex



Flexible Standard Setting Wall & Floor Tile Adhesive

- Genuine S1 flexibility makes Setaflex suitable for a wide range of tiles and substrates
- Bucket life of 3 – 4 hours
- Ideal for timber substrates
- Ideal for underfloor heating systems
- Fixes ceramic, porcelain and natural stone tiles
- Ideal for swimming pools and wet rooms
- Improved slip resistance
- 3mm – 12mm bed depth
- Internal and external use



Standard Set Setaflex is a polymer modified, flexible standard setting cement based wall and floor tile adhesive with increased adhesion and non-slip properties. Standard Set Setaflex has been specially formulated for fixing a large variety of tiles including ceramic, porcelain and natural stone tiles to substrates subject to limited movement and/or vibration such as plywood overlay, timber framework and underfloor heating systems as well as for fixing to solid substrates such as concrete and sand/cement screed. Formulated to give an extended bucket life of approximately 3 hours, Standard Set Setaflex is ideal where longer working times are required. Standard Set Setaflex is ideal for areas subject to prolonged or permanent wet conditions such as swimming pools and wet rooms. Standard Set Setaflex can be used internally and externally and it is unaffected by frost after setting.

TILES:

- ✓ Ceramics
- ✓ Porcelain
- ✓ Marble
- ✓ Travertine
- ✓ Limestone
- ✓ Slate
- ✗ Quartz
- ✓ Granite
- ✗ Composite
- ✓ Terracotta
- ✓ Mosaics
- ✓ Quarry

SUBSTRATES:

- | | |
|--|---|
| <ul style="list-style-type: none"> ✓ Sand/Cement Screed ✓ Concrete ✓ Plywood Overlay (12mm min) ✓ Electric Underfloor Heating ✓ Water/Wet System Underfloor Heating ✓ Tile Backer Boards ✓ Existing Ceramic, Porcelain and Natural Stone Tiles ✓ Flooring Grade Asphalt & Bitumen ✓ Anhydrite Screeds | <ul style="list-style-type: none"> ✓ Plaster ✓ Plasterboard ✓ Fibre Cement Sheet ✓ Cement/Sand Render ✓ Concrete Brick/Block ✗ T & G Floorboards ✗ Floating Floors ✓ Existing Vinyl Tiles ✗ Steel/Metal Surfaces ✗ Fibreglass ✗ Green Screed |
|--|---|

Water Addition:

4.4 – 4.6 litres of water to 20kg Standard Set Setaflex

Coverage:

20kg will cover 5 – 6m² at 3mm thin bed application

Pot Life at 20°C:

Approximately 3 – 4 hours

Grout After:

24 hours

Application Temperature:

+5°C to +30°C

Colours:

Grey & White

Pack Sizes:

20kg



Light Weight Standard Set



> 60% EXTRA COVERAGE



Flexible Standard Setting Wall & Floor Tile Adhesive

- Greater than 60% extra coverage over traditional sand/cement adhesives
- Fantastic non-slip properties
- Minimum of 50% lighter per m²
- Contains 20% recycled material
- Ideal for plywood overlay
- Ideal for underfloor heating systems
- Fixes ceramic, porcelain and natural stone tiles
- Bucket life of 3 – 4 hours
- 3mm - 12mm bed depth



Light Weight Standard is a polymer modified, flexible standard setting cement based wall and floor tile adhesive made using special lightweight fillers and additives to produce excellent non-slip properties, improved workability and greater than 60% extra coverage over traditional sand/cement based adhesives. Light Weight Standard has been specially formulated for fixing a large variety of tiles including ceramic, porcelain and natural stone tiles to substrates subject to limited movement and/or vibration such as plywood overlay, timber framework and underfloor heating systems as well as for fixing to solid substrates such as concrete and sand/cement screed. Light Weight Standard provides an extended bucket life of 3 – 4 hours and it is ideal for areas subject to prolonged or permanent wet conditions such as swimming pools and wet rooms. Light Weight Standard can be used internally and externally and it is unaffected by frost after setting.

TILES:

- ✓ Ceramics
- ✓ Porcelain
- ✓ Marble
- ✓ Travertine
- ✓ Limestone
- ✓ Slate
- ✗ Quartz
- ✓ Granite
- ✗ Composite
- ✓ Terracotta
- ✓ Mosaics
- ✓ Quarry

SUBSTRATES:

- ✓ Sand/Cement Screed
- ✓ Concrete
- ✓ Plywood Overlay (12mm min)
- ✓ Electric Underfloor Heating
- ✓ Water/Wet System Underfloor Heating
- ✓ Tile Backer Boards
- ✓ Existing Ceramic, Porcelain and Natural Stone Tiles
- ✓ Flooring Grade Asphalt & Bitumen
- ✓ Anhydrite Screeds

- ✓ Plaster
- ✓ Plasterboard
- ✓ Fibre Cement Sheet
- ✓ Cement/Sand Render
- ✓ Concrete Brick/Block
- ✗ T & G Floorboards
- ✗ Floating Floors
- ✓ Existing Vinyl Tiles
- ✗ Steel/Metal Surfaces
- ✗ Fibreglass
- ✗ Green Screed

Water Addition:

8 – 9 litres of water to 15kg Light Weight Standard

Coverage:

15kg will cover 10 - 12m² at 3mm thin bed application

Pot Life at 20°C:

Approximately 3 – 4 hours

Grout After:

24 hours

Application Temperature:

+5°C to +30°C

Colours:

White

Pack Sizes:

15kg



Grout 3000




Please note:
Colours shown are for illustration purposes.
Actual colours may vary slightly from the printed colours

GROUTS



Grout 3000

Flexible & Highly Versatile Fast Setting Wall & Floor Grout

- Suitable for 2mm – 15mm joint widths
- Flexible, ideal for underfloor heating systems
- Flexible, ideal for timber substrates
- High water resistance, use in showers, wet rooms and swimming pools
- Contains >25% recycled material 
- Internal and external use
- Matching Silicone 3000+ available



Grout 3000 is a highly versatile, flexible wall and floor grout specially formulated using carefully selected cements and additives to produce a smooth, creamy and controlled workability. Grout 3000 is flexible and it is suitable for use on surfaces subject to limited movement and/or vibration such as plywood overlay and underfloor heating systems as well as for solid surfaces such as concrete and sand/cement screed. Grout 3000 is suitable for grouting joint widths between 2 – 15mm wide on a large variety of tiles including ceramic, porcelain and natural stone tiles. Grout 3000 has very low permeability making it ideal for areas subject to prolonged or permanent wet conditions such as wet rooms and swimming pools. Grout 3000 can be used internally and externally and it is unaffected by frost after setting.

When mixed with Flexmaster additive, the flexural properties of Grout 3000 are enhanced making it suitable for wider range substrates such as T & G Floorboards.



TILES:

- ✓ Ceramics
- ✓ Porcelain
- ✓ Marble
- ✓ Travertine
- ✓ Limestone
- ✓ Slate
- ✓ Quartz
- ✓ Granite
- ✓ Composite
- ✓ Terracotta
- ✓ Mosaics
- ✓ Quarry
- ✓ Glass

SUBSTRATES:

* when mixed with Flexmaster Additive

- ✓ Sand/Cement Screed
- ✓ Concrete
- ✓ Plywood Overlay (12mm min)
- ✓ Electric Underfloor Heating
- ✓ Water/Wet System Underfloor Heating
- ✓ Tile Backer Boards
- ✓ Existing Ceramic, Porcelain and Natural Stone Tiles
- ✓ Flooring Grade Asphalt & Bitumen
- ✓ Anhydrite Screeds

- ✓ Plaster
- ✓ Plasterboard
- ✓ Fibre Cement Sheet
- ✓ Cement/Sand Render
- ✓ Concrete Brick/Block
- ✓ T & G Floorboards*
- ✓ Floating Floors*
- ✓ Existing Vinyl Tiles
- ✓ Steel/Metal Surfaces*
- ✓ Fibreglass*
- ✓ Green Screed

Coverage chart per 5kg unit Grout 3000

Tile Size	3mm Joint Width	6mm Joint Width	12mm Joint Width
Mosaic: 24 x 24 x 10	1.2m ²	0.6m ²	0.3m ²
150 x 150 x 8	10m ²	5m ²	2.5m ²
300 x 300 x 10	17m ²	9m ²	4.5m ²
600 x 600 x 10	30m ²	15m ²	7.5m ²

Water Addition:

5kg Grout 3000 requires 1.2 – 1.35 litres of water

Pot Life at 20°C:

Approximately 30 - 45 minutes

Curing Time:

Walk on after 3 hours

Allow 24 hours before contact with water

Allow 28 days before submerging in water

Application Temperature:

+5°C to +30°C

Colours:

14 colours available see opposite page

Pack Sizes:

5kg and 10kg



Wide Joint Grout

Fast Setting Wide Joint Floor & Wall Grout

- Suitable for 3mm – 15mm joint widths
- Fast setting, walk on after 3 hours
- For use on solid substrates only
- Suitable for commercial and heavy traffic environments
- Internal and external use
- Mix with Flexmaster Additive for improved performance



Wide Joint Grout is a fast setting cement based floor and wall grout developed for grouting joints in tiles between 3mm – 15mm wide. Wide Joint Grout is suitable for use on a large variety of tiles including ceramic, porcelain and natural stone tiles. The product can only be used on solid surfaces such as concrete and sand/cement screed. Its fast setting capabilities allow for light foot traffic after 3 hours. When set, Wide Joint Grout is hard wearing making it ideal for use in high traffic areas. Wide Joint Grout can be used internally and externally and it is unaffected by frost after setting.

When mixed with Flexmaster additive, the properties of Wide Joint Grout are enhanced making it suitable for a wider range of substrates such as underfloor heating systems & plywood overlay and areas subject to prolonged wet conditions such as showers and wet rooms.

TILES:

- ✓ Ceramics
- ✓ Porcelain
- ✓ Marble
- ✓ Travertine
- ✓ Limestone
- ✓ Slate
- ✗ Quartz
- ✓ Granite
- ✗ Composite
- ✓ Terracotta
- ✗ Mosaics
- ✗ Glass
- ✓ Quarry

SUBSTRATES:

- ✓ Sand/Cement Screed
- ✓ Concrete
- ✗ Plywood Overlay
- ✗ Electric Underfloor Heating
- ✗ Water/Wet System Underfloor Heating
- ✓ Tile Backer Boards
- ✓ Existing Ceramic, Porcelain and Natural Stone Tiles
- ✓ Flooring Grade Asphalt & Bitumen
- ✗ Anhydrite Screeds
- ✓ Plaster
- ✗ Plasterboard
- ✗ Fibre Cement Sheet
- ✓ Cement/Sand Render
- ✓ Concrete Brick/Block
- ✗ T & G Floorboards
- ✗ Floating Floors
- ✓ Existing Vinyl Tiles
- ✗ Steel/Metal Surfaces
- ✗ Fibreglass
- ✗ Green Screed

Coverage chart per 5kg unit Wide Joint Grout

Tile Size	3mm Joint Width	6mm Joint Width	12mm Joint Width
Mosaic: 24 x 24 x 10	1.2m ²	0.6m ²	0.3m ²
150 x 150 x 8	10m ²	5m ²	2.5m ²
300 x 300 x 10	17m ²	9m ²	4.5m ²
600 x 600 x 10	30m ²	15m ²	7.5m ²

- Water Addition:** 10kg Wide Joint Grout requires approximately 1.6 litres of water
- Pot Life at 20°C:** Approximately 30 - 45 minutes
- Curing Time:** Light Foot traffic after 3 hours
Wide Joint Grout will reach final set after 24 hours
Allow 3 days before contact with heavy traffic
- Application Temp:** +5°C to +30°C
- Colours:** Grey
- Pack Sizes:** 5kg, 10kg and 20kg



GROUTS

Flexigrout

Flexible Fast Setting Wide Joint Floor & Wall Grout

- Suitable for 3mm – 15mm joint widths
- Flexible, ideal for underfloor heating systems
- Flexible, ideal for timber substrates
- Suitable for commercial and heavy traffic environments
- Internal and external use
- Available in a range of colours



Flexigrout is a highly versatile, fast setting and flexible cement based floor and wall grout developed for grouting joints in tiles between 3mm – 15mm wide. Flexigrout is suitable for use on surfaces subject to limited movement and/or vibration such as plywood overlay and underfloor heating systems as well as for solid surfaces such as concrete and sand/cement screed. Flexigrout has been developed for grouting a large variety of tiles including ceramic, porcelain and natural stone tiles. When set, Flexigrout is hard wearing making it ideal for use in commercial and high traffic environments. Flexigrout can be used internally and externally and it is unaffected by frost after setting.

When mixed with Flexmaster additive, the flexural properties of Flexigrout are enhanced making it suitable for wider range substrates such as T & G floorboards and floating floors.



TILES:

- ✓ Ceramics
- ✓ Porcelain
- ✓ Marble
- ✓ Travertine
- ✓ Limestone
- ✓ Slate
- ✓ Quartz
- ✓ Granite
- ✓ Composite
- ✓ Terracotta
- ✓ Mosaics
- ✗ Glass
- ✓ Quarry

SUBSTRATES:

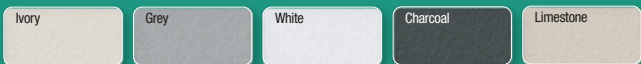
* when mixed with Flexmaster Additive

- ✓ Sand/Cement Screed
- ✓ Concrete
- ✓ Plywood Overlay (12mm min)
- ✓ Electric Underfloor Heating
- ✓ Water/Wet System Underfloor Heating
- ✓ Tile Backer Boards
- ✓ Existing Ceramic, Porcelain and Natural Stone Tiles
- ✓ Flooring Grade Asphalt & Bitumen
- ✓ Anhydrite Screeds
- ✓ Plaster
- ✓ Plasterboard
- ✓ Fibre Cement Sheet
- ✓ Cement/Sand Render
- ✓ Concrete Brick/Block
- ✓ T & G Floorboards*
- ✓ Floating Floors*
- ✓ Existing Vinyl Tiles
- ✓ Steel/Metal Surfaces*
- ✓ Fibreglass*
- ✓ Green Screed

Coverage chart per 5kg unit Flexigrout

Tile Size	3mm Joint Width	6mm Joint Width	12mm Joint Width
Mosaic: 24 x 24 x 10	1.2m ²	0.6m ²	0.3m ²
150 x 150 x 8	10m ²	5m ²	2.5m ²
300 x 300 x 10	17m ²	9m ²	4.5m ²
600 x 600 x 10	30m ²	15m ²	7.5m ²

Available Colours



Water Addition:

10kg Flexigrout Grey & Charcoal requires 1.6 litres of water
10kg Flexigrout White, Ivory & Limestone requires 2 litres

Pot Life at 20°C:

Approximately 30 - 45 minutes

Curing Time:

Light Foot traffic after 3 hours
Flexigrout will reach final set after 24 hours
Allow 3 days before contact with heavy traffic

Application Temperature:

+5°C to +30°C

Pack Sizes:

5kg, 10kg and 20kg



GROUTS

Wall Grout

Water Resistant Wall Tile Grout

- Fine textured, easy to apply and clean
- Suitable for 1mm - 4mm joint widths
- Mould resistant
- Water resistant
- Suitable for all types of tiles
- Mix with Flexmaster Additive for improved performance



Wall Grout is a very fine textured, cement based grout developed for finishing joints in wall tiles between 1mm – 4mm wide. The product has been specially formulated using carefully selected cements and additives to give a smooth, creamy and controlled workability and ease of use. It is suitable for use on a large variety of tiles including ceramic, porcelain and natural stone tiles. Wall Grout is ideal for use in areas that are subject to prolonged wet conditions and condensation such as domestic bathrooms and kitchens, communal showers and commercial kitchens. When set, it is resistant to water and mould growth. Wall Grout can be used internally and externally and it is unaffected by frost after setting.

When mixed with Flexmaster additive, the properties of Wall Grout are enhanced making it suitable for a wider range of application areas and substrates.

TILES:

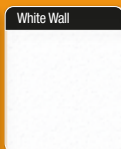
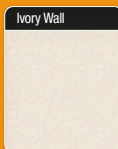
- ✓ Ceramics
- ✓ Porcelain
- ✓ Marble
- ✓ Travertine
- ✓ Limestone
- ✓ Slate
- ✓ Quartz
- ✓ Granite
- ✓ Composite
- ✓ Terracotta
- ✓ Mosaics
- ✓ Glass
- ✓ Quarry

SUBSTRATES:

- | | |
|---|---|
| <ul style="list-style-type: none"> ✗ Sand/Cement Screed ✗ Concrete ✗ Plywood Overlay ✗ Electric Underfloor Heating ✗ Water/Wet System Underfloor Heating ✓ Tile Backer Boards ✓ Existing Ceramic, Porcelain and Natural Stone Tiles ✗ Flooring Grade Asphalt & Bitumen ✗ Anhydrite Screeds | <ul style="list-style-type: none"> ✓ Plaster ✓ Plasterboard ✓ Fibre Cement Sheet ✓ Cement/Sand Render ✓ Concrete Brick/Block ✗ T & G Floorboards ✗ Floating Floors ✗ Existing Vinyl Tiles ✗ Steel/Metal Surfaces ✗ Fibreglass ✗ Green Screed |
|---|---|

Coverage chart per 5kg unit Wall Grout

Tile Size	3mm Joint Width
Mosaic: 24 x 24 x 10	1.2m ²
150 x 150 x 8	10m ²
300 x 300 x 10	17m ²
600 x 600 x 10	30m ²



Water Addition:
Pot Life at 20°C:
Curing Time:

10kg Wall Grout requires 3.1 – 3.4 litres of water
Approximately 30 minutes
Wall Grout will start to harden after 3 - 4 hours
Wall Grout will reach final set after 24 hours
Allow 3 days before contact with water

Application Temperature: +5°C to +30°C
Colours: White & Ivory
Pack Sizes: 3.5kg and 10kg



GROUT SELECTOR

Please Note:

We strongly advise applying your chosen grout to a test area when grouting tiles prone to scratching

	Wall Grout 4mm	Grout 3000 15mm	Wide Joint Grout 15mm	Flexigrout 15mm
Maximum Joint Width				
AREAS OF USE				
Walls	✓	✓	✦	✦
Floors	✗	✓	✓	✓
Interior & Exterior	✓	✓	✓	✓
Solid Substrates	✓	✓	✓	✓
Flexible Substrates	✓ + A	✓	✓ + A	✓
Underfloor Heating	✗	✓	✓ + A	✓
Heavy Trafficked Areas	✗	✓	✓	✓
Domestic Showers/Bathrooms	✓	✓	✗	✓
Communal Showers/Bathrooms	✓	✓	✗	✓
Swimming Pools	✗	✓	✗	✗
Soft Faced Stone/Tiles	✓	✓ + T	✓ + T	✓ + T
Anti Mould Technology	✗	✓	✗	✗
FINISH				
Smooth	✓	✓	✗	✗
Traditional	✗	✗	✓	✓

✓ = HIGHLY RECOMMENDED

✦ = OK

✗ = DO NOT USE

A = WITH THE ADDITION OF FLEXMASTER

T = TEST FIRST

SILICONE SEALANT



Silicone 3000 Trade

A Premium Mould Resistant Silicone Sealant

- For sealing joints between sanitary ware and a tiled finish
- Protects against mould growth
- Excellent adhesion properties
- Highly flexible
- Suitable for use in domestic and commercial environments
- Excellent adhesion properties to glass, porcelain and ceramic tiles
- Easy to apply and smooth



Silicone 3000 Trade is a premium, high performance and highly flexible silicone sealant for walls and floors. Silicone 3000 Trade contains advanced Anti-Mould technology that will protect against mould growth when in use. Silicone 3000 Trade is an acetoxy based sealant with excellent adhesion properties, allowing it to be used on a wide range of surfaces including ceramic, glass and porcelain tiles. Silicone 3000 Trade is ideal for sealing joints between sanitary ware and ceramic / porcelain tiles in bathrooms, kitchens, showers and wet rooms in domestic and commercial environments. Silicone 3000 Trade is waterproof and it is ideal for use in areas subject to prolonged wet conditions such as showers and wet rooms. Silicone 3000 Trade is very easy to apply, smooth and wipe off. The product is suitable for interior and exterior use.

Please note – Silicone 3000 Trade is not suitable for use with natural stone tiles.

TILES:

- | | |
|--------------|--------------|
| ✓ Ceramics | ✗ Granite |
| ✓ Porcelain | ✗ Composite |
| ✗ Marble | ✓ Terracotta |
| ✗ Travertine | ✓ Mosaics |
| ✗ Limestone | ✓ Glass |
| ✓ Slate | ✓ Quarry |
| ✗ Quartz | |

APPLICATION AREAS/ENVIRONMENTS:

- ✓ Domestic and Commercial Showers
- ✓ Bathrooms
- ✓ Wetrooms
- ✓ Steamrooms
- ✓ Laundry/Utility Rooms
- ✓ Areas Subject to Prolonged Wet Conditions

Coverage: 8.5 linear metres using a 6 x 6mm bead size per 310ml cartridge.

Curing Time: Forms a skin after 30 – 60 minutes
Cures at a rate of 3 – 4mm per day
Allow 3 days before contact with water

Application Temperature: +5°C to +30°C

Colours: Clear & White

Pack Sizes: 310ml cartridge



SILICONE SEALANT



Silicone 3000+

A Premium Neutral Cure Mould Resistant Silicone Sealant

- For sealing joints between sanitary ware and a tiled finish
- For sealing movement joints in wall and floor tiling installations
- Highly flexible and has excellent adhesion properties
- Neutral cure, non-staining formulation
- Suitable for use with natural stone tiles
- Protects against mould growth
- Domestic & commercial applications
- Internal & external use
- Matches the Grout 3000 colour range



Silicone 3000+ is a premium solvent free, highly flexible and high performance silicone sealant for walls and floors. Silicone 3000+ is a neutral cure and non-staining silicone sealant which means it is suitable for use with sensitive natural stones such as granite and marble. Silicone 3000+ contains advanced Anti-Mould technology that will protect against mould growth when in use. The Silicone 3000+ colour range has been specifically developed to compliment the Grout 3000 colour range and all colours of grout have a matching silicone. Silicone 3000+ has excellent adhesion properties and it is suitable for use on a large variety of surfaces including ceramic, glass, porcelain, natural stone, PVC and wood. Silicone 3000+ is waterproof and it is ideal for use in areas subject to prolonged wet conditions such as showers and wet rooms. Silicone 3000+ is very easy to apply, smooth and clean off and it is suitable for interior and exterior use

TILES:

- ✓ Ceramics
- ✓ Porcelain
- ✓ Marble*
- ✓ Travertine*
- ✓ Limestone*
- ✓ Slate
- ✓ Quartz*
- ✓ Granite*
- ✓ Composite*
- ✓ Terracotta
- ✓ Mosaics
- ✓ Glass
- ✓ Quarry

* Certain types of sensitive natural stone may be prone to discolouration or staining with the use of silicone sealant. We recommend testing the silicone before application.

APPLICATION AREAS/ENVIRONMENTS:

- ✓ Domestic & Commercial Showers
- ✓ Bathrooms & Wetrooms
- ✓ Domestic & Commercial Kitchens
- ✓ Areas Subject To Prolonged Wet Conditions
- ✓ Movement Joints In Tiling Installations
- ✓ Window & Door Fittings

- Coverage:** 8.5 linear metres using a 6 x 6mm bead size per 310ml cartridge.
- Curing Time:** Forms a skin after 30 – 60 minutes
Cures at a rate of 3 – 4mm per day
Allow 3 days before contact with water
- Application Temperature:** +5°C to +30°C
- Colours:** 14 colours to match Grout 3000
- Pack Sizes:** 310ml cartridge



TILE ADHESIVE SELECTOR

Please Note: If chosen tiles are vulnerable to water staining, use a rapid setting adhesive

TILES	Ceramic	Porcelain	Natural Stone	Quarry & Terracotta	Mosaics	Quartz & Composite
SUBSTRATE						
INTERIOR WALLS						
Gypsum Plaster	HJKLMG	JKLMG	JKLMG	HJKLMG	JKLMG	E
Gypsum Plasterboard	JKLMG	JKLMG	JKLMG	JKLMG	JKLMG	E
Cement: Sand Render	JKLMG	JKLMG	JKLMG	JKLMG	JKLMG	E
Concrete Block	HJKLMG	JKLMG	JKLMG	HJKLMG	JKLMG	E
Existing Ceramic, Porcelain & Natural Stone Tiles	JKLMG	JKLMG	JKLMG	JKLMG	JKLMG	E
Tile Backer Boards fixed to Solid Substrates e.g. Blockwork/Brick	HJKLMG	JKLMG	JKLMG	HJKLMG	JKLMG	E
Tilebacker Boards fixed to Timber Framework	KL MG	KL MG	KL MG	KL MG	KL MG	E
Plywood	KL MG	KL MG	KL MG	KL MG	KL MG	E
Fibre Cement Sheet & Calcium Silicate Boards fixed to Timber Framework	KL MG	KL MG	KL MG	KL MG	KL MG	E
INTERIOR FLOORS						
Sand and Cement Screed	ABCDEFGHI M	BCDEFGM	BCDEFGM	ABCDEFGHI M	BCDEFGM	E
Concrete	ABCDEFGHI M	BCDEFGM	BCDEFGM	ABCDEFGHI M	BCDEFGM	E
Anhydrite/Gypsum Screed	N	N	N	N	N	E
Flooring Grade Asphalt & Bitumen	CDEFGM	CDEFGM	CDEFGM	CDEFGM	CDEFGM	E
Existing Ceramic, Porcelain & Natural Stone Tiles	BCDEFGM	BCDEFGM	BCDEFGM	BCDEFGM	BCDEFGM	E
Existing Vinyl Tiles/Sheet Vinyl	BCDEFGM	BCDEFGM	BCDEFGM	BCDEFGM	BCDEFGM	E
Plywood Overlay	CDEFGM	CDEFGM	CDEFGM	CDEFGM	CDEFGM	E
T & G Floorboards	E	E	E	E	E	E
Floating Floors	E	E	E	E	E	E
Metal/Steel	E	E	E	E	E	E
Tilebacker Boards fixed to Solid Substrates e.g. sand/cement screed	ABCDEFGHI M	BCDEFGM	BCDEFGM	ABCDEFGHI M	BCDEFGM	E
Tilebacker Boards fixed to Timber Substrates	CDEFGM	CDEFGM	CDEFGM	CDEFGM	CDEFGM	E
Electric Underfloor Heating	CDEFGM	CDEFGM	CDEFGM	CDEFGM	CDEFGM	E
Underfloor Heated Screeds	CDEFGM	CDEFGM	CDEFGM	CDEFGM	CDEFGM	E
Tilemaster Anti-fracture Mat & Uncoupling Membranes	CDEFGM	CDEFGM	CDEFGM	CDEFGM	CDEFGM	E
Green Screed	E	E	E	E	E	N/A
EXTERIOR WALLS & FLOORS						
Concrete Block	JKLMG	JKLMG	JKLMG	JKLMG	JKLMG	N/A
Cement: Sand Render	JKLMG	JKLMG	JKLMG	JKLMG	JKLMG	N/A
Existing Ceramic, Porcelain & Natural Stone Tiles	JKLMG	JKLMG	JKLMG	JKLMG	JKLMG	N/A
Sand and Cement Screed	ABCDEFGHI M	BCDEFGM	BCDEFGM	ABCDEFGHI M	BCDEFGM	N/A
Concrete	ABCDEFGHI M	BCDEFGM	BCDEFGM	ABCDEFGHI M	BCDEFGM	N/A
Green Screed	E	E	E	E	E	N/A



Please Note: In most cases our recommended adhesive is standard setting for walls and rapid setting for floors. The equivalent standard / rapid setting adhesive is also suitable e.g. Gypsum Plasterboard – whilst we recommend a standard setting adhesive, the equivalent rapid setting adhesive is also suitable

www.tilemasteradhesives.co.uk

**Service,
support and
delivery
nationwide**



Tilemaster Adhesives Ltd.,
Unit 4 Tomlinson Point,
Tomlinson Road, Leyland,
Lancashire, PR25 2DY.

Tel: +44 (0) 845 208 0040 / 01772 456831

Fax: +44 (0) 845 208 0041

email: info@tilemasteradhesives.co.uk